



# Woods Hole, Martha's Vineyard and Nantucket Steamship Authority

*Our mission is to operate a safe, effective, and reliable transportation system for the islands of Martha's Vineyard and Nantucket with a commitment to sustainability, accessibility, our port communities, and public engagement.*

*Posted March 1, 2021 8:50 AM*

WOODS HOLE, MARTHA'S VINEYARD & NANTUCKET  
STEAMSHIP AUTHORITY

PORT COUNCIL  
Wednesday, March 3, 2021  
9:00 AM

First Floor Meeting Room (Room #103), SSA Administrative Offices  
228 Palmer Avenue, Falmouth, MA 02540

**NOTE:** Due to ongoing concerns regarding COVID-19, the Steamship Authority meeting room will be CLOSED TO THE PUBLIC during this session. The public may participate in the meeting, including Public Comment, by going to [zoom.us](https://zoom.us) and using meeting ID 851-3455-6877. Participants can also use the same meeting ID and join telephonically by calling one of the following numbers: 669-900-6833, 346-248-7799, 929-436-2866, 253-215-8782, 301-715-8592, or 312-626-6799.











1. Minutes
  - a) Approval of the Minutes of the February 3, 2021 Meeting
2. Management Report
  - a) COVID-19
  - b) Business Summary for the Month of January 2021
  - c) Updates on Current Projects including:
    1. Woods Hole Terminal Reconstruction Project (Marine)
    2. Woods Hole Terminal Reconstruction Project (Landside)
    3. Update on M/V Woods Hole Dry Dock Status
    4. SQMS Update
    5. Website Update/Redesign
  - d) Proposed 2022 Operating Schedule
  - e) General Manager's Goals for 2021
3. Old/New Business
4. Public Comment

These agenda items are those that the Chairman reasonably anticipates will be discussed at the meeting. Not all items listed may in fact be discussed, and other items not listed because they are not anticipated by the Chairman to be discussed may also be brought up for discussion to the extent permitted by law. The Port Council's practice is to reserve time under New Business for topics that the Chairman does not anticipate will be discussed at the meeting. Other topics not listed but discussed by the Port Council during previous meetings might also be brought up for discussion by other Port Council Members under Old Business even though the Chairman does not anticipate a discussion about any such topics.

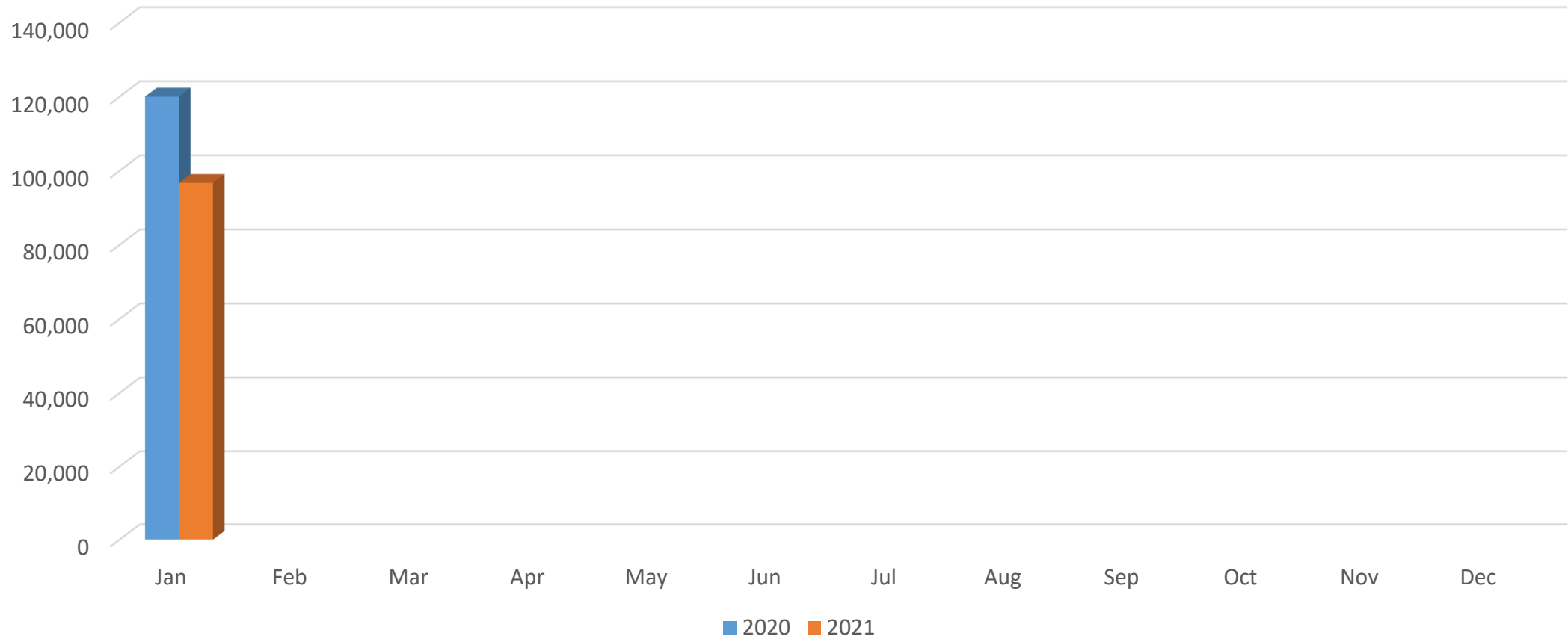
# Business Summary – January 2021

Port Council Meeting 03-03-2021

# Passengers Carried – January 2021 vs. 2020

		Monthly Variance vs. Prior Year	Monthly % Difference vs. Prior Year			Y-T-D Variance vs. Prior Year	Y-T-D % Difference vs. Prior Year
Martha's Vineyard Route		- 22,020	- 20.7%			- 22,020	- 20.7%
Nantucket Regular Ferry		- 512	-4.1%			- 512	- 4.1%
Nantucket Fast Ferry		- 750	- 52.7%			- 750	- 52.7%
Nantucket Route Subtotal		- 1,262	- 9.2%			-1,262	- 9.2%
<b>Total Passengers</b>		<b>- 23,282</b>	<b>- 19.4%</b>			<b>- 23,282</b>	<b>- 19.4%</b>

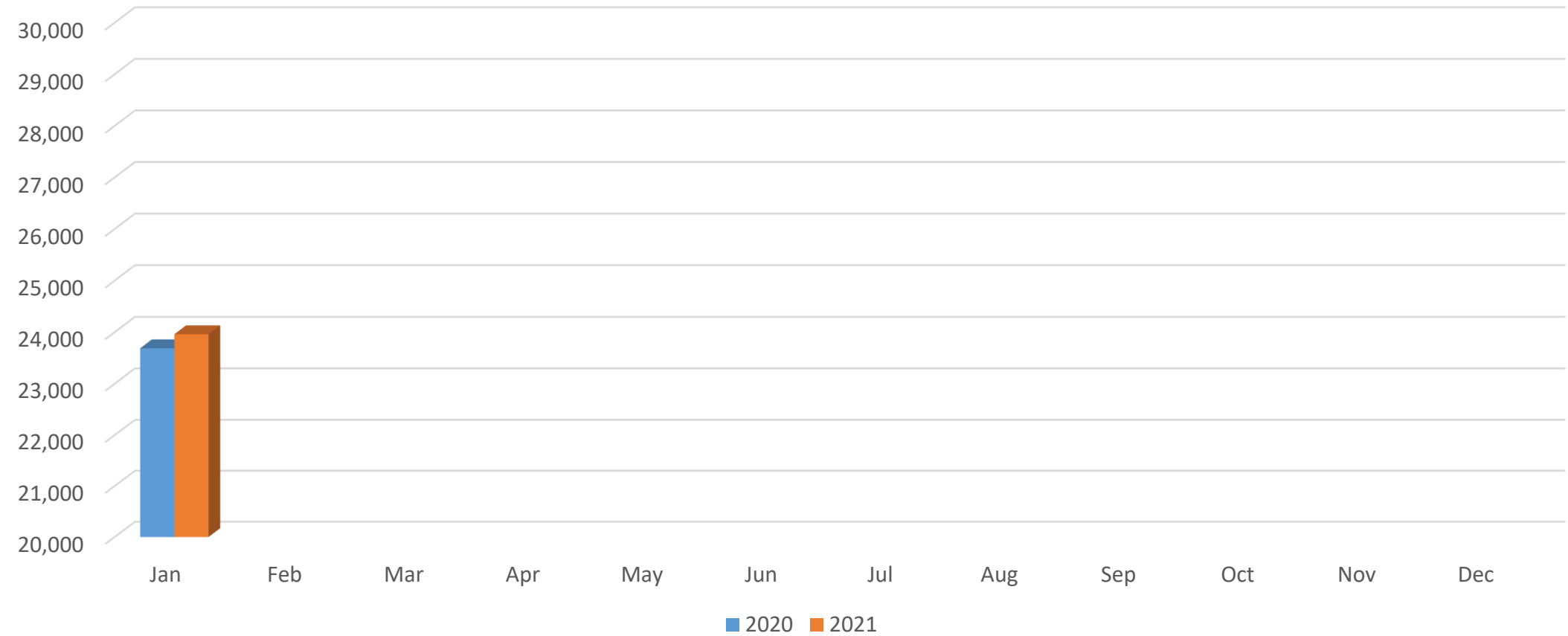
# Passengers Carried 2020 - 2021



# Automobiles Carried – January 2021 vs. 2020

		Monthly Variance vs. Prior Year	Monthly % Difference vs. Prior Year			Y-T-D Variance vs. Prior Year	Y-T-D % Difference vs. Prior Year
Martha’s Vineyard Route							
Standard Fare	↑	2,411	29.9%		↑	2,411	29.9%
Excursion Fare	↓	- 2,519	- 19.5%		↓	- 2,519	- 19.5%
Total – Martha’s Vineyard	↓	- 108	- 0.5%		↓	- 108	- 0.5%
Nantucket Route							
Standard Fare	↑	584	67.5%		↑	584	67.5%
Excursion Fare	↓	- 204	- 11.3%		↓	- 204	- 11.3%
Total - Nantucket	↑	380	14.2%		↑	380	14.2%
Total Automobiles	↑	272	1.1%		↑	272	1.1%

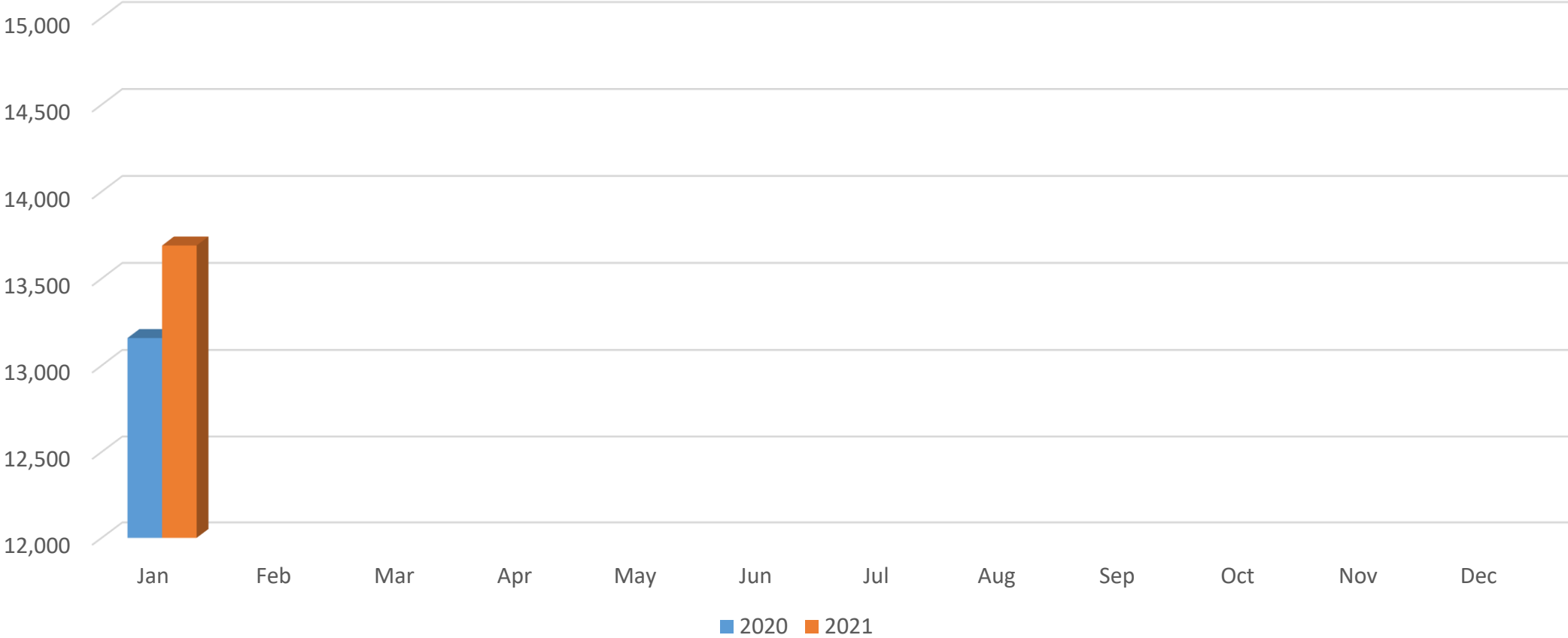
# Automobiles Carried 2020 - 2021



# Trucks Carried – January 2021 vs. 2020

		Monthly Variance vs. Prior Year	Monthly % Difference vs. Prior Year			Y-T-D Variance vs. Prior Year	Y-T-D % Difference vs. Prior Year
Martha's Vineyard Route							
Standard Fare	↑	529	18.4%		↑	529	18.4%
Excursion Fare	↓	- 288	- 8.9%		↓	- 288	- 8.9%
20 Feet & Over	↑	158	4.5%		↑	158	4.5%
Total – Martha's Vineyard	↑	399	4.2%		↑	399	4.2%
Nantucket Route							
Standard Fare	↑	72	10.6%		↑	72	10.6%
Excursion Fare	↑	6	0.8%		↑	6	0.8%
20 Feet & Over	↑	55	2.6%		↑	55	2.6%
Total - Nantucket	↑	133	3.7%		↑	133	3.7%
Total Trucks	↑	532	4.0%		↑	532	4.0%

# Trucks Carried 2020 - 2021

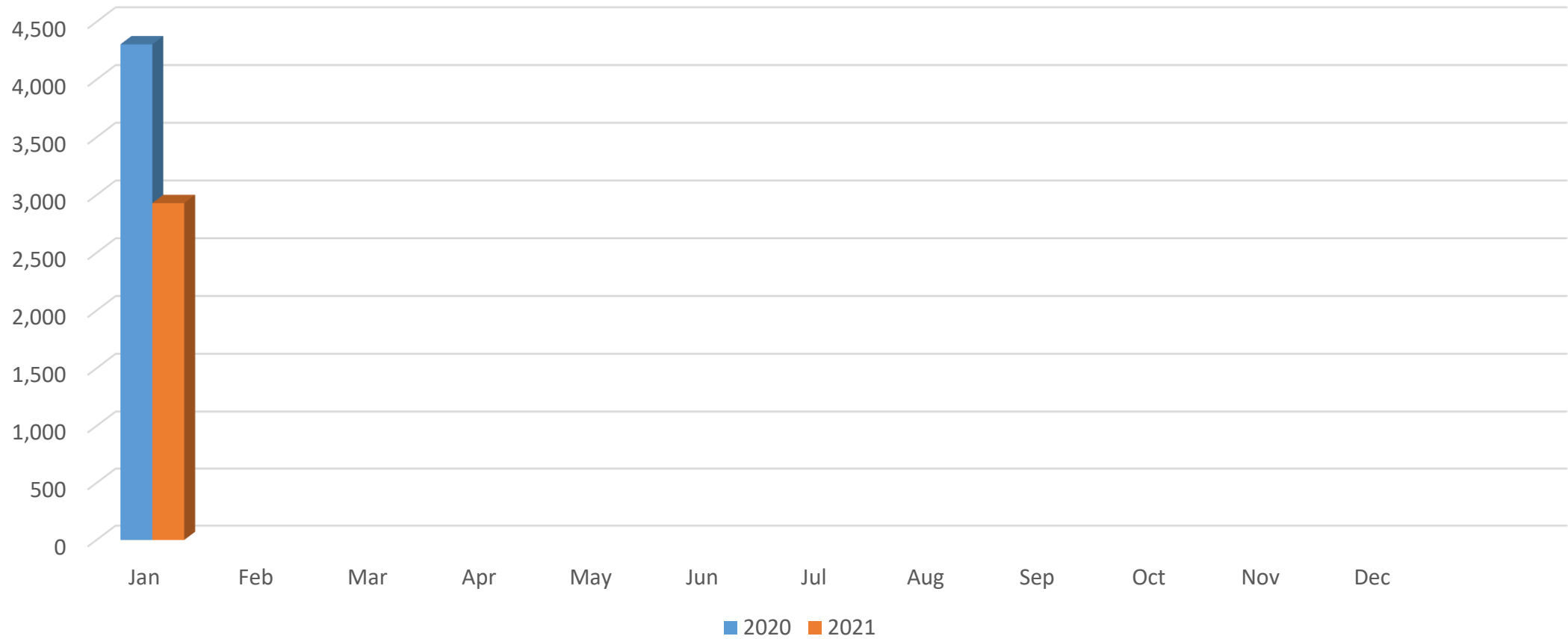




# Cars Parked– January 2021 vs. 2020

		Monthly Variance vs. Prior Year	Monthly % Difference vs. Prior Year			Y-T-D Variance vs. Prior Year	Y-T-D % Difference vs. Prior Year
Martha's Vineyard Route	↓	- 1,231	- 32.8%		↓	- 1,231	- 32.8%
Nantucket Route	↓	- 144	- 26.1%		↓	- 144	- 26.1%
<b>Total Cars Parked</b>	↓	<b>- 1,375</b>	<b>- 31.9%</b>		↓	<b>- 1,375</b>	<b>- 31.9%</b>

# Cars Parked 2020 - 2021



# Financial Snapshot



## January

- Operating Revenue of **\$4,696,683** was **higher** than budget by **\$47,607**
- Other Income of **\$212,356** was **higher** than budget by **\$34,379**
- Operating Expenses of **\$7,922,701** was **lower** than budget by **\$876,421**
- Income Deductions of **\$360,035** was **higher** than budget by **\$1,225**
- Net Operating Loss of **\$3,373,697** was **lower** than budget by **\$957,181**

## January – January

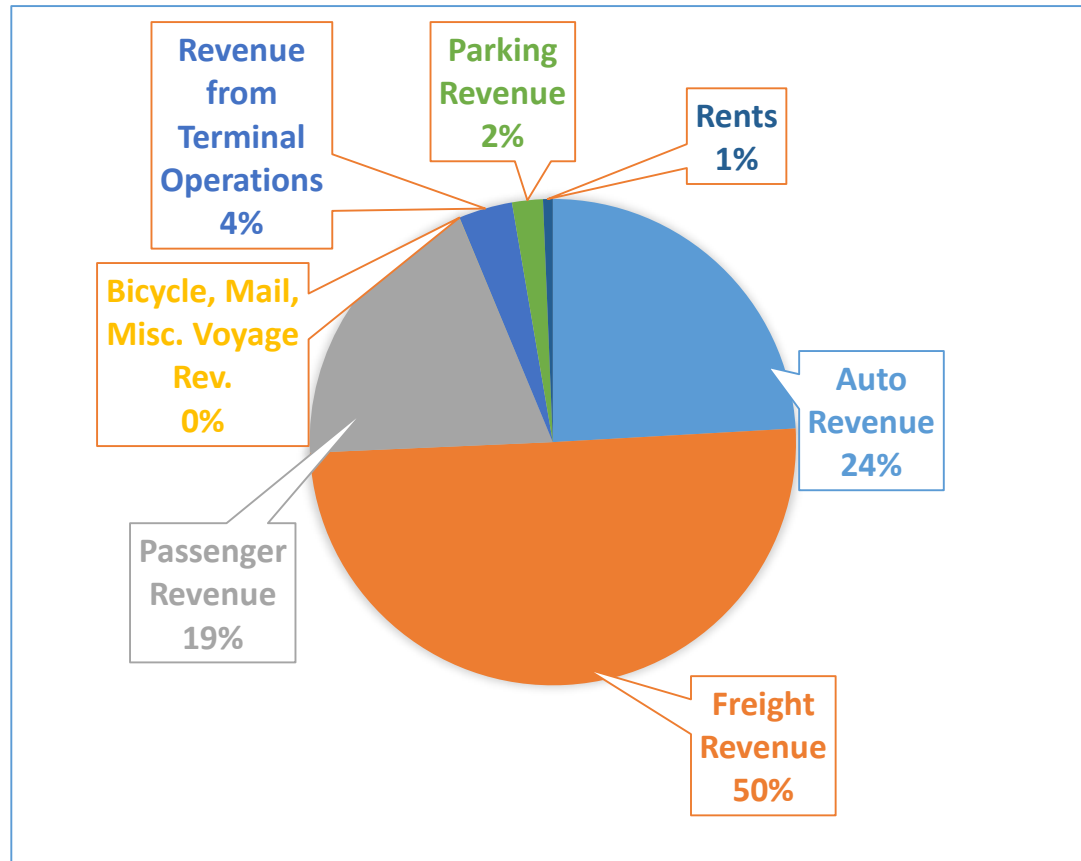
- Operating Revenue of **\$4,696,683** was **higher** than budget by **\$47,607**
- Other Income of **\$212,356** was **higher** than budget by **\$34,379**
- Operating Expenses of **\$7,922,701** was **lower** than budget by **\$876,421**
- Income Deductions of **\$360,035** was **higher** than budget by **\$1,225**
- Net Operating Loss of **\$3,373,697** was **lower** than budget by **\$957,181**

# Operating Revenues – January 2021 vs. Budget

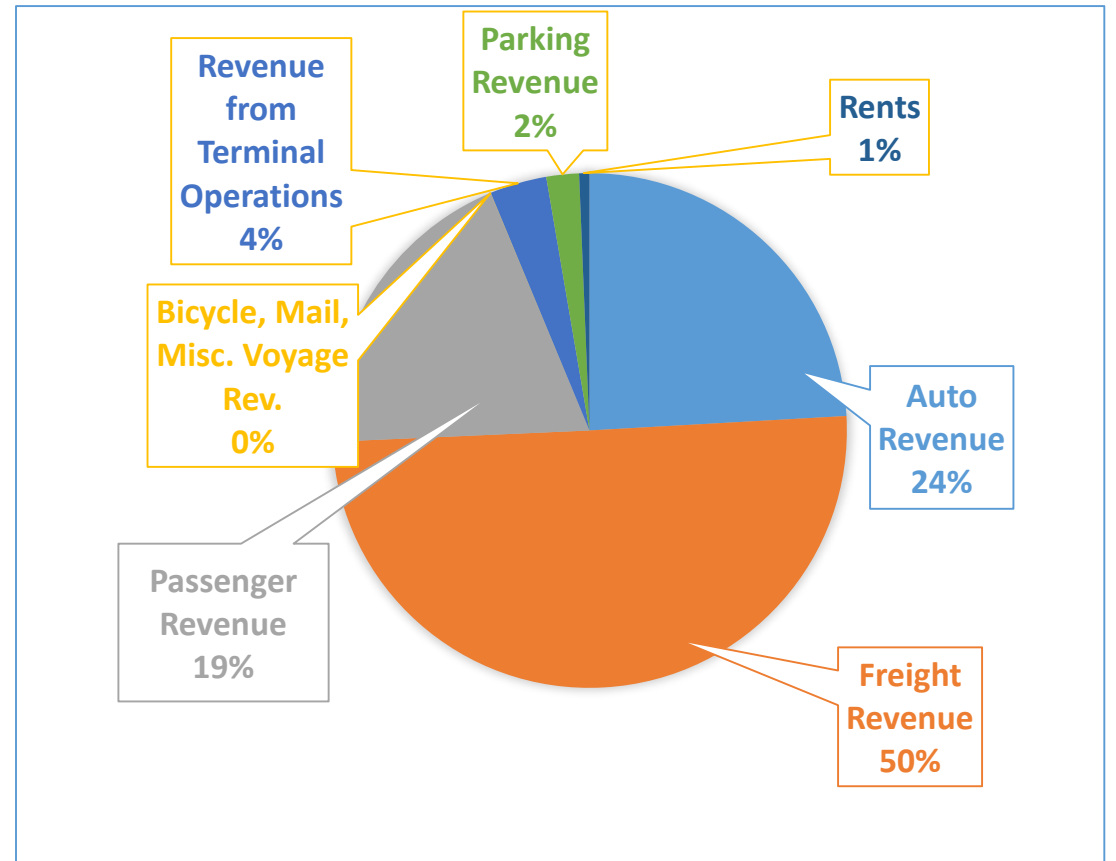
		Monthly Variance vs. Budget	Monthly % Difference vs. Budget		Y-T-D Variance vs. Budget	Y-T-D % Difference vs. Budget
Waterline Revenues						
Automobile Revenue	↑	\$ 105,606	10.3%	↑	\$ 105,606	10.3%
Freight Revenue	↑	175,048	8.0%	↑	175,048	8.0%
Passenger Revenue	↓	- 116,004	- 11.3%	↓	- 116,004	- 11.3%
Misc. Voyage Revenue	↓	- 24,148	- 97.2%	↓	- 24,148	- 97.2%
Term. Oper. Revenue	↓	- 81,567	- 32.7%	↓	-81,567	- 32.7%
Parking Revenue	↑	6,964	7.8%	↑	6,964	7.8%
Rent Revenue	↓	- 18,292	- 37.6%	↓	- 18,292	- 37.6%
<b>Total Operating Revenue</b>	↑	<b>\$ 47,607</b>	<b>1.0%</b>	↑	<b>\$ 47,607</b>	<b>1.0%</b>
<b>Total Other Income</b>	↑	<b>\$ 34,379</b>	<b>19.3%</b>	↑	<b>\$ 34,379</b>	<b>19.3%</b>
<b>Total Operating &amp; Other</b>	↑	<b>\$ 81,986</b>	<b>1.7%</b>	↑	<b>\$ 81,896</b>	<b>1.7%</b>

# Operating Revenues - 2021

January



January - January

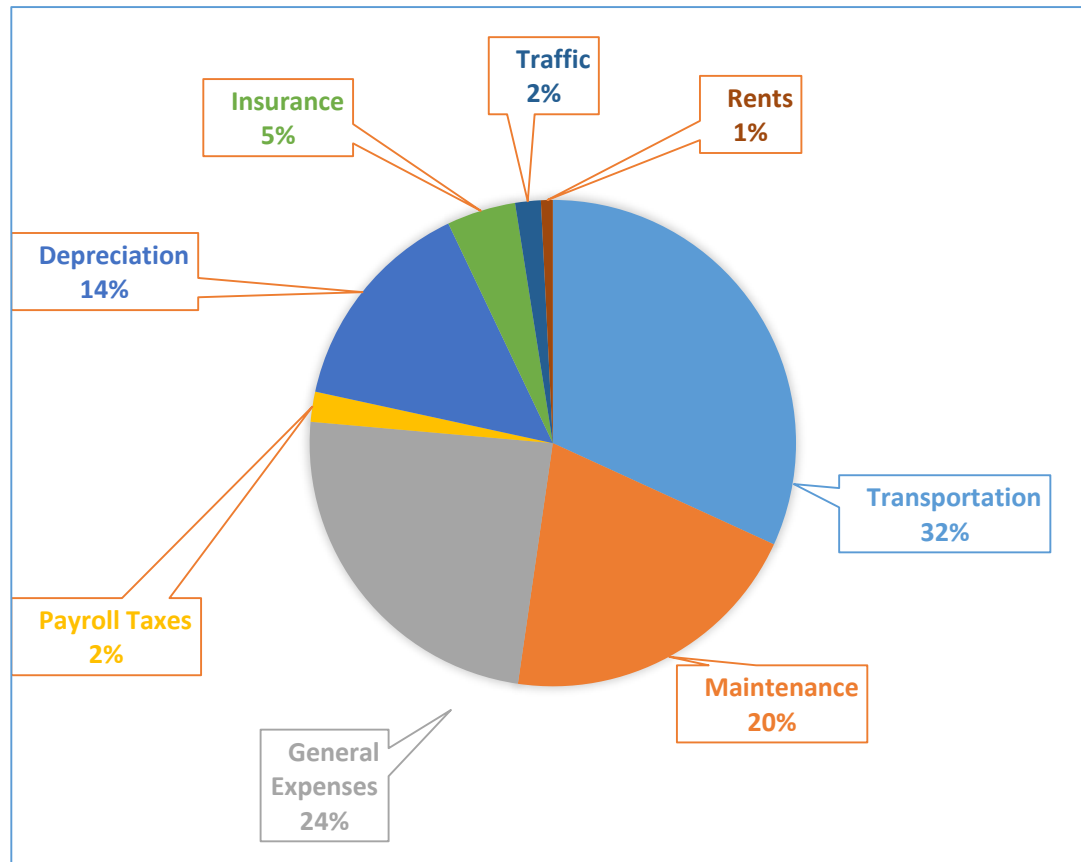


# Operating Expenses – January 2021 vs. Budget

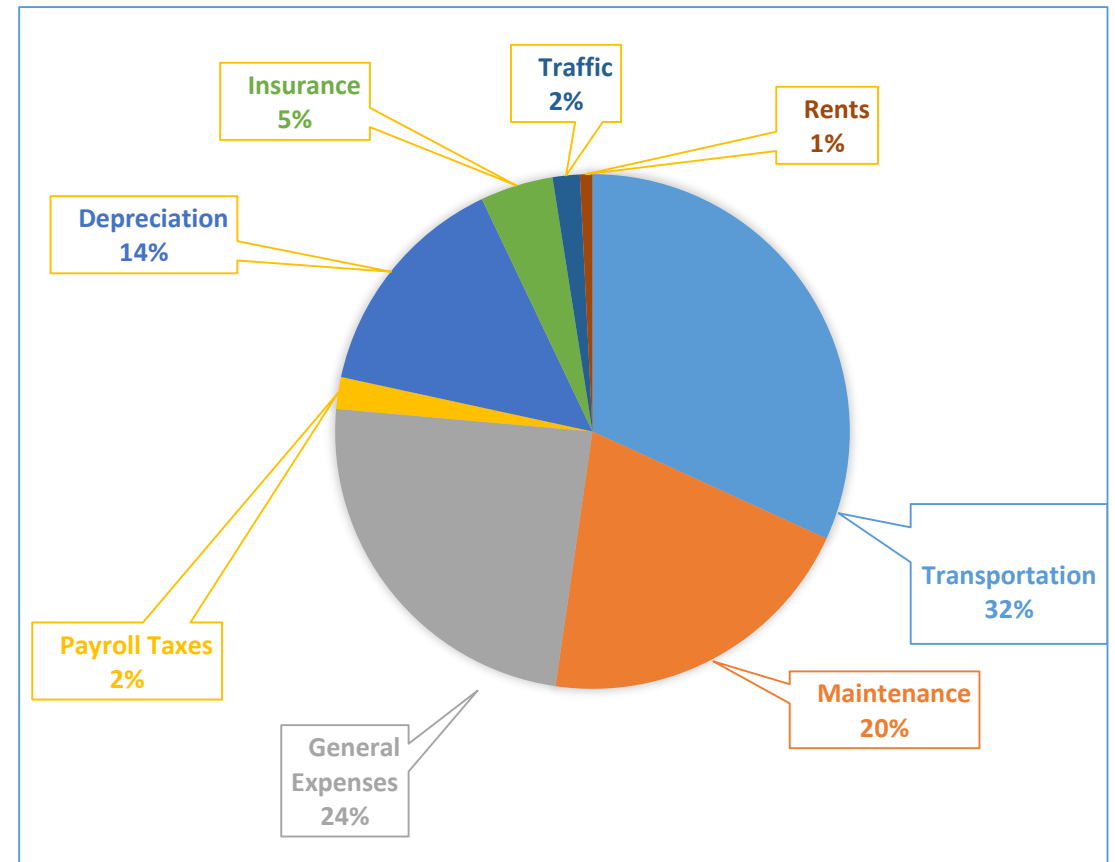
		Monthly Variance vs. Budget	Monthly % Difference vs. Budget			Y-T-D Variance vs. Budget	Y-T-D % Difference vs. Budget
Waterline Expenses							
Maintenance	↓	\$ - 583,377	- 26.5%		↓	\$ - 583,377	- 26.5%
Depreciation	↑	8,651	0.8%		↑	8,651	0.8%
Vessel Operations	↑	62,052	4.0%		↑	62,052	- 12.4%
Terminal Operations	↑	9,271	1.0%		↑	9,271	- 14.7%
Traffic Expense	↓	- 62,645	- 31.7%		↓	- 62,645	- 46.6%
General Expense	↓	-249,790	-11.6%		↓	- 249,790	2.9%
Insurance	↓	- 1,929	- 0.5%		↓	- 1,929	- 0.1%
Rents	↑	3,716	6.3%		↑	3,716	- 2.0%
Payroll Taxes	↓	- 62,370	- 28.3%		↓	- 62,370	- 12.9%
<b>Total Operating Expenses</b>	↓	<b>\$ - 876,421</b>	<b>- 10.0%</b>		↓	<b>\$ - 876,421</b>	<b>- 10.0%</b>
<b>Total Other Expenses</b>	↑	<b>\$ 1,225</b>	<b>0.3%</b>		↑	<b>\$ 1,225</b>	<b>0.3%</b>
<b>Total Operating &amp; Other</b>	↓	<b>\$ - 875,196</b>	<b>- 9.6%</b>		↓	<b>\$ - 875,196</b>	<b>- 9.6%</b>

# Operating Expenses - 2021

## January



## January - January



## Business Summary for the Month of January, 2021

### Part I - Traffic Statistics

	Month of January 2020	Month of January 2021	DIFF	%DIFF	YTD through January 2020	YTD through January 2021	DIFF	%DIFF
Number of Passengers Carried								
Martha's Vineyard	106,240	84,220	(22,020)	-20.7%	106,240	84,220	(22,020)	-20.7%
Nantucket								
Regular	12,360	11,848	(512)	-4.1%	12,360	11,848	(512)	-4.1%
Fast Ferry	1,423	673	(750)	-52.7%	1,423	673	(750)	-52.7%
Subtotal - Nantucket	13,783	12,521	(1,262)	-9.2%	13,783	12,521	(1,262)	-9.2%
Total	120,023	96,741	(23,282)	-19.4%	120,023	96,741	(23,282)	-19.4%
Number of Automobiles Carried								
Martha's Vineyard								
Regular	8,076	10,487	2,411	29.9%	8,076	10,487	2,411	29.9%
Excursion	12,942	10,423	(2,519)	-19.5%	12,942	10,423	(2,519)	-19.5%
Subtotal - M. Vineyard	21,018	20,910	(108)	-0.5%	21,018	20,910	(108)	-0.5%
Nantucket								
Regular	865	1,449	584	67.5%	865	1,449	584	67.5%
Excursion	1,806	1,602	(204)	-11.3%	1,806	1,602	(204)	-11.3%
Subtotal - Nantucket	2,671	3,051	380	14.2%	2,671	3,051	380	14.2%
Total	23,689	23,961	272	1.1%	23,689	23,961	272	1.1%
Number of Trucks Carried								
Martha's Vineyard								
Less than 20' - Regular	2,877	3,406	529	18.4%	2,877	3,406	529	18.4%
Less than 20' - Excursion	3,235	2,947	(288)	-8.9%	3,235	2,947	(288)	-8.9%
20' and over	3,476	3,634	158	4.5%	3,476	3,634	158	4.5%
sub-total - M.Vineyard	9,588	9,987	399	4.2%	9,588	9,987	399	4.2%
Nantucket								
Less than 20' - Regular	679	751	72	10.6%	679	751	72	10.6%
Less than 20' - Excursion	775	781	6	0.8%	775	781	6	0.8%
20' and over	2,116	2,171	55	2.6%	2,116	2,171	55	2.6%
sub-total - Nantucket	3,570	3,703	133	3.7%	3,570	3,703	133	3.7%
Total	13,158	13,690	532	4.0%	13,158	13,690	532	4.0%



## Business Summary for the Month of January, 2021

### Part I - Traffic Statistics

	Month of January 2020	Month of January 2021	DIFF	%DIFF	YTD through January 2020	YTD through January 2021	DIFF	%DIFF
Number of Cars Parked								
Woods Hole, Falmouth and Cataumet	3,753	2,522	(1,231)	-32.8%	3,753	2,522	(1,231)	-32.8%
Hyannis, Nantucket	552	408	(144)	-26.1%	552	408	(144)	-26.1%
Total	<u>4,305</u>	<u>2,930</u>	<u>(1,375)</u>	<u>-31.9%</u>	<u>4,305</u>	<u>2,930</u>	<u>(1,375)</u>	<u>-31.9%</u>
Average Length of Stay - Cars Parked (Days)								
Woods Hole, Falmouth and Cataumet	1.72	1.82	0.10	5.8%	1.74	1.82	0.08	4.6%
Hyannis, Nantucket	3.22	3.32	0.10	3.1%	2.90	3.32	0.42	14.5%
Total	<u>1.89</u>	<u>2.03</u>	<u>0.14</u>	<u>7.4%</u>	<u>1.89</u>	<u>2.03</u>	<u>0.14</u>	<u>7.4%</u>
Average Revenue per Passenger *								
Martha's Vineyard	\$ 6.74	\$ 7.77	\$ 1.03	15.3%	\$ 6.74	\$ 7.77	\$ 1.03	15.3%
Nantucket	18.32	18.80	0.48	2.6%	18.32	18.80	0.48	2.6%
Total	<u>\$ 8.07</u>	<u>\$ 9.20</u>	<u>\$ 1.13</u>	<u>14.0%</u>	<u>\$ 8.07</u>	<u>\$ 9.20</u>	<u>\$ 1.13</u>	<u>14.0%</u>
Average Revenue per Automobile								
Martha's Vineyard	\$ 31.44	\$ 38.71	\$ 7.27	23.1%	\$ 31.44	\$ 38.71	\$ 7.27	23.1%
Nantucket	81.38	104.71	23.33	28.7%	81.38	104.71	23.33	28.7%
Total	<u>\$ 37.07</u>	<u>\$ 47.11</u>	<u>\$ 10.04</u>	<u>27.1%</u>	<u>\$ 37.07</u>	<u>\$ 47.11</u>	<u>\$ 10.04</u>	<u>27.1%</u>
Average Revenue per Truck								
Martha's Vineyard	\$ 102.95	\$ 117.36	\$ 14.41	14.0%	\$ 102.95	\$ 117.36	\$ 14.41	14.0%
Nantucket	295.70	321.52	25.82	8.7%	295.70	321.52	25.82	8.7%
Total	<u>\$ 155.24</u>	<u>\$ 172.59</u>	<u>\$ 17.35</u>	<u>11.2%</u>	<u>\$ 155.24</u>	<u>\$ 172.59</u>	<u>\$ 17.35</u>	<u>11.2%</u>

\* Excludes any town embarkation fees.

## Business Summary for the Month of January, 2021

### Part Ila- Net Income (Loss) from Operations (Monthly)

	January ACTUAL 2020	January ACTUAL 2021	ACTUAL 2021 vs. ACTUAL 2020	January BUDGET 2021	ACTUAL 2021 vs. BUDGET
Vs. 2021 Operating Budget					
Net Income (Loss) from Operations					
Operating Revenues	\$ 4,308,573	\$ 4,696,683	\$ 388,110	\$ 4,649,076	\$ 47,607
Other Income	191,407	212,356	20,949	177,977	34,379
Total Income	4,499,980	4,909,039	409,059	4,827,053	81,986
Operating Expenses	9,863,166	7,922,701	(1,940,465)	8,799,122	(876,421)
Fixed Charges and Other Expenses	313,166	360,035	46,869	358,810	1,225
Total Expenses	10,176,332	8,282,736	(1,893,596)	9,157,932	(875,196)
Net Operating Income (Loss)	<u>\$ (5,676,352)</u>	<u>\$ (3,373,697)</u>	<u>\$ 2,302,655</u>	<u>\$ (4,330,879)</u>	<u>\$ 957,181</u>
Operating Revenues:					
Auto Revenue	873,164	\$ 1,132,083	\$ 258,919	\$ 1,026,477	\$ 105,606
Freight Revenue	2,036,362	2,357,692	321,330	2,182,644	175,048
Passenger Revenue	989,221	911,895	(77,326)	1,027,899	(116,004)
Bicycle, Mail, Misc. Voyage Rev.	24,702	690	(24,012)	24,838	(24,148)
Revenue from Terminal Operations	248,094	167,808	(80,286)	249,375	(81,567)
Parking Revenue	99,450	96,165	(3,285)	89,201	6,964
Rents	37,580	30,350	(7,230)	48,642	(18,292)
Sub-Total - Operating Revenue	4,308,573	4,696,683	388,110	4,649,076	47,607
Other Income:					
Interest Income	16,950	174,199	157,249	12,000	162,199
Miscellaneous Income	174,457	38,157	(136,300)	165,977	(127,820)
Sub-Total - Other Income	191,407	212,356	20,949	177,977	34,379
Total Income	<u>\$ 4,499,980</u>	<u>\$ 4,909,039</u>	<u>\$ 409,059</u>	<u>\$ 4,827,053</u>	<u>\$ 81,986</u>

**Part IIa- Net Income (Loss) from Operations (Monthly)**

	January ACTUAL 2020	January ACTUAL 2021	ACTUAL 2021 vs. ACTUAL 2020	January BUDGET 2021	ACTUAL 2021 vs. BUDGET
Vs. 2021 Operating Budget					
Operating Expenses:					
Wages	\$ 3,007,568	\$ 2,905,580	\$ (101,988)	\$ 2,965,770	\$ (60,190)
Pensions Health & Welfare	1,140,813	1,171,049	30,236	1,385,385	(214,336)
Payroll Taxes	178,878	158,334	(20,544)	220,704	(62,370)
Depreciation	1,056,384	1,151,249	94,865	1,142,598	8,651
Vessel Fuel Oil	402,832	314,877	(87,955)	315,908	(1,031)
Insurance	352,317	363,077	10,760	365,006	(1,929)
Direct Vessel Maintenance (Excl'd. Wages)	2,621,459	735,593	(1,885,866)	1,238,582	(502,989)
Direct Terminal Maintenance (Excl'd. Wages)	35,441	41,125	5,684	83,950	(42,825)
Utilities	189,367	208,096	18,729	175,118	32,978
Other	878,107	873,721	(4,386)	906,101	(32,380)
Sub-Total - Operating Expenses	9,863,166	7,922,701	(1,940,465)	8,799,122	(876,421)
Fixed Charges and Other Expenses:					
Bond Interest & Expense	271,887	320,892	49,005	321,396	(504)
Misc. Charges or Deductions	41,279	39,143	(2,136)	37,414	1,729
Sub-Total - Other Expenses	313,166	360,035	46,869	358,810	1,225
Total Expenses	\$ 10,176,332	\$ 8,282,736	\$ (1,893,596)	\$ 9,157,932	\$ (875,196)
Net Operating Income (Loss)	\$ (5,676,352)	\$ (3,373,697)	\$ 2,302,655	\$ (4,330,879)	\$ 957,182

## **Budgetary Management Discussion and Analysis - January, 2021**

Total operating revenues for January increased by \$47,607 or 1.0% versus the amount projected in the 2021 operating budget, for a total of \$4,696,683 in operating revenues. Passenger revenues for the month were down \$116,000 versus budget projections, which represents a decrease of 11.3%. Automobile revenues were up \$106,000 or 10.3%, versus budget projections for January. Freight revenues were up \$175,000, or 8.0%, versus budget projections for the month. Parking revenues were up during January by \$7,000, or 7.8%. Concession revenues in January were down \$24,000 or 100.00%. Rent revenues from barge unloading and rental car space were down \$18,000 or 37.6% in January versus budget.

During January, the vessels made a combined 1,465 trips. This represents a decrease of 119 trips, or 7.5%, versus the originally budgeted amount for the month. On the Vineyard route, 8 trips were canceled for mechanical reasons, 14 for weather related and 87 for traffic demands while 0 unscheduled trips and 0 available trips were added. On the Nantucket route, 2 trips were canceled for mechanical reasons, 18 for weather related and 8 for traffic demands while 18 unscheduled and 0 available trips were added.

Total operating expenses for the month were down \$876,421 or 10.0% versus the amount projected in the 2021 budget for a total of \$7,922,701. Maintenance expenses for the month were down \$583,000, or 26.5%, versus budget. Repair expenses for the M/V Martha's Vineyard were down \$6,000; repairs for the M/V Woods Hole were down \$197,000; repairs on the M/V Governor were up \$10,000; the M/V Sankaty repair expenses were down \$1,000; repairs for the M/V Nantucket were down \$272,000; repair expenses for the M/V Katama were up \$5,000; repairs on the M/V Eagle were down \$48,000; repairs on the M/V Gay Head were down \$13,000; repairs for the M/V Island Home were up \$73,000; and repairs for the M/V Iyanough were down \$125,000 versus budget. Repairs to buildings and structures were down \$44,000, repairs to motor vehicles were down \$48,000 and repairs to office and terminal equipment was up \$72,000 for the month.

Vessel fuel expense of \$315,000 was down by \$1,000 or 0.3% versus budget estimates. The average actual cost per gallon for vessel fuel oil in January was \$1.80, including net hedging costs, while the budgeted cost was \$1.757 per gallon. During January, the vessels logged 19,112 miles, which were 1,172 miles lower than budget, or a decrease of 0.3%. During January, 177,000 gallons of vessel fuel were consumed. This represents a decrease of 3,000 gallons, or 1.6%, versus budget. Insurance expenses were down \$13,000 versus budget. General administrative expenses for the month were down \$250,000 or 11.6%. Legal expense was down \$9,000; pension expense was down \$72,000, health care expense was down \$146,000, Families First Coronavirus Response Act paid sick leave costs were up \$2,000, disability contributions were up \$25,000, unemployment contributions were down \$23,000, training expense was up \$12,000 and credit card expense was up \$6,000.

Other income, including interest income, debt premium and license income, totaled \$212,356 and was \$34,379 higher than budget projections. Income deductions, including interest on funded debt and pension withdrawal, totaled \$360,035 and were \$1,225 higher than budget. The Authority's net operating loss for the month of January, including other income, income deductions and bond interest expense, was \$3,373,697 or \$957,182 lower than the budgeted net loss for the month.

## Business Summary for the Year-To-Date as of January, 2021 (Continued)

### Part IIb- Net Income (Loss) from Operations (Year to Date)

	YTD - January ACTUAL 2020	YTD - January ACTUAL 2021	YTD ACTUAL 2021 vs. YTD ACTUAL 2020	YTD - January BUDGET 2021	YTD ACTUAL 2021 vs. YTD BUDGET
Vs. 2021 Operating Budget					
Net Income (Loss) from Operations					
Operating Revenues	\$ 4,308,573	\$ 4,696,683	\$ 388,110	\$ 4,649,076	\$ 47,607
Other Income	191,407	212,356	20,949	177,977	34,379
Total Income	4,499,980	4,909,039	409,059	4,827,053	81,986
Operating Expenses	9,863,166	7,922,701	(1,940,465)	8,799,122	(876,421)
Fixed Charges and Other Expenses	313,166	360,035	46,869	358,810	1,225
Total Expenses	10,176,332	8,282,736	(1,893,596)	9,157,932	(875,196)
Net Operating Income (Loss)	\$ (5,676,352)	\$ (3,373,697)	\$ 2,302,655	\$ (4,330,879)	\$ 957,182
Operating Revenues:					
Auto Revenue	\$ 873,164	\$ 1,132,083	\$ 258,919	\$ 1,026,477	\$ 105,606
Freight Revenue	2,036,362	2,357,692	321,330	2,182,644	175,048
Passenger Revenue	989,221	911,895	(77,326)	1,027,899	(116,004)
Bicycle, Mail, Misc. Voyage Rev.	24,702	690	(24,012)	24,838	(24,148)
Revenue from Terminal Operations	248,094	167,808	(80,286)	249,375	(81,567)
Parking Revenue	99,450	96,165	(3,285)	89,201	6,964
Rents	37,580	30,350	(7,230)	48,642	(18,292)
Sub-Total - Operating Revenue	4,308,573	4,696,683	388,110	4,649,076	47,607
Other Income:					
Interest Income	16,950	174,199	157,249	12,000	162,199
Miscellaneous Income	174,457	38,157	(136,300)	165,977	(127,820)
Sub-Total - Other Income	191,407	212,356	20,949	177,977	34,379
Total Income	\$ 4,499,980	\$ 4,909,039	\$ 409,059	\$ 4,827,053	\$ 81,986

**Part IIb- Net Income (Loss) from Operations (Year to Date)**

	YTD - January ACTUAL 2020	YTD - January ACTUAL 2021	YTD ACTUAL 2021 vs. YTD ACTUAL 2020	YTD - January BUDGET 2021	YTD ACTUAL 2021 vs. YTD BUDGET
Vs. 2021 Operating Budget					
Operating Expenses:					
Wages	\$ 3,007,568	2,905,580	\$ (101,988)	\$ 2,965,770	\$ (60,190)
Pensions Health & Welfare	1,140,813	1,171,049	30,236	1,385,385	(214,336)
Payroll Taxes	178,878	158,334	(20,544)	220,704	(62,370)
Depreciation	1,056,384	1,151,249	94,865	1,142,598	8,651
Vessel Fuel Oil	402,832	314,877	(87,955)	315,908	(1,031)
Insurance	352,317	363,077	10,760	365,006	(1,929)
Direct Vessel Maintenance (Excl'd. Wages)	2,621,459	735,593	(1,885,866)	1,238,582	(502,989)
Direct Terminal Maintenance (Excl'd. Wages)	35,441	41,125	5,684	83,950	(42,825)
Utilities	189,367	208,096	18,729	175,118	32,978
Other	878,107	873,721	(4,386)	906,101	(32,380)
Sub-Total - Operating Expenses	9,863,166	7,922,701	(1,940,465)	8,799,122	(876,421)
Fixed Charges and Other Expenses:					
Bond Interest & Expense	271,887	320,892	49,005	321,396	(504)
Misc. Charges or Deductions	41,279	39,143	(2,136)	37,414	1,729
Sub-Total - Other Expenses	313,166	360,035	46,869	358,810	1,225
Total Expenses	10,176,332	8,282,736	(1,893,596)	9,157,932	(875,196)
Net Operating Income (Loss)	(5,676,352)	(3,373,697)	2,302,655	(4,330,879)	957,182

## **Budgetary Management Discussion and Analysis: January - January, 2021**

Year to date total operating revenues increased by \$47,607 or 1.0% versus the amount projected in the 2021 operating budget, for a total of \$4,696,683 in operating revenues. Passenger revenues for the year to date were down \$116,000 versus budget projections, which represents a 11.3% decrease. Automobile revenues were up \$106,000 or 10.3%, versus budget projections. Freight revenues were up \$175,000 or 8.0%, versus budget projections. Parking revenues were up, \$7,000, or 7.8%, compared to budget forecast. Rent revenues from barge unloading and rental car space were down \$18,000, or 37.6%, versus budget.

Year to date, the vessels made a combined 1,465 trips. This represents a decrease of 119 trips, or 7.5%, versus budget. On the Vineyard route, 8 trips were canceled for mechanical reasons, 14 for weather related and 87 for traffic demands, while 0 unscheduled trips and 0 available trips were added. On the Nantucket route, 2 trips were canceled for mechanical reasons, 18 for weather related and 8 for traffic demands, while 18 unscheduled trips and 0 available trips were added.

Year to date operating expenses were down \$876,421 or 10.0%, versus the amount projected in the 2021 budget for a total of \$7,992,701. Maintenance expenses for the year are down \$583,000 or 26.5%, versus budget. Repairs for the M/V Martha's Vineyard were down \$6,000; the M/V Woods Hole repair expense was down \$197,000; repair expenses for the M/V Governor were up \$10,000; repair expenses for the M/V Sankaty were down \$1,000; M/V Nantucket repair expenses were down \$272,000; repairs on the M/V Katama are up \$5,000; repair expenses for the M/V Eagle were down \$48,000; repairs on the M/V Gay Head were down \$13,000; M/V Island Home repair expenses were up \$73,000; and repair expenses for the M/V Iyanough were down \$125,000. Terminal and dolphin and dock repairs in Vineyard Haven were down \$2,000; while Oak Bluffs were down \$3,000; Woods Hole were down \$14,000; Nantucket were down \$4,000 and were down in Hyannis by \$38,000. Motor vehicle repairs were down \$48,000 and other maintenance expense was up by \$78,000.

Vessel fuel expense of \$315,000 was down \$1,000 or 0.3%, below budget estimates. The average actual cost per gallon for vessel fuel oil was \$1.800 including net hedging costs, while the budgeted cost was \$1.757 per gallon. 19,112 vessel miles have been logged in the year, a decrease of 1,172 miles, or 5.8%, versus budget. 177,000 gallons of vessel fuel were consumed. This represents a decrease of 3,000 gallons or 1.6% versus budget. General administrative expenses for the year were down 11.6%, or \$250,000. Legal expense was down \$9,000, pension expense was down \$72,000, health care costs were down \$146,000, Families First Coronavirus Response Act paid sick leave costs were up \$2,000, disability contributions were up \$25,000, and unemployment contributions were down \$23,000. Training expense was up \$12,000 and credit card fees were up \$6,000.

Other income, including interest income, debt premium, and license income, totaled \$212,356 and was \$34,379 lower than budget projections. Income deductions, including interest on funded debt and pension withdrawal, totaled \$360,035 and were \$1,225 higher than budget. Year to date, the Authority's net operating loss, including other income, income deductions and bond interest expense, was \$3,373,697 or \$957,182 lower than budget projections.

### Part III - Cash Balances

	January, 2021 Amount	Variance vs. Budget Positive / (Negative)	Year to Date Amount	Variance vs. Budget Positive / (Negative)
<b>Cash Balance - Operations Fund</b>				
Beginning Balance	\$ 12,691,469	\$ 941,469	\$ 12,691,469	\$ 941,469
Cash Receipts	15,831,437	637,414	15,831,437	637,414
Cash Receipts - Grants	-	-	-	-
Cash Receipts - Capital Projects	-	-	-	-
Cash Disbursements	(7,533,836)	118,180	(7,533,836)	118,180
Cash Disbursements - Capital Projects	-	-	-	-
Transfers to Special Purpose Funds	-	-	-	-
Ending Balance	<u>\$ 20,989,070</u>	<u>\$ 1,697,063</u>	<u>\$ 20,989,070</u>	<u>\$ 1,697,063</u>
<b>Cash Balance - Special-Purpose Funds</b>				
<b>Sinking Fund</b>				
Beginning Balance	\$ 9,635,184	\$ -	\$ 9,635,184	\$ -
Transfers from Revenue Fund	-	-	-	-
Income from Investments	1,393	(4,557)	1,393	(4,557)
Accrued Interest Received	-	-	-	-
Debt Service Payments	-	-	-	-
Ending Balance	<u>\$ 9,636,577</u>	<u>\$ (4,557)</u>	<u>\$ 9,636,577</u>	<u>\$ (4,557)</u>
<b>Replacement Fund</b>				
Beginning Balance	\$ 10,315,194	\$ -	\$ 10,315,194	\$ -
Transfers from Revenue Fund	-	-	-	-
Transfers from Bond Redemption	-	-	-	-
Proceeds from Disposal of Property	-	-	-	-
Income from Investments	1,491	(5,259)	1,491	(5,259)
Withdrawals	-	-	-	-
Ending Balance	<u>\$ 10,316,685</u>	<u>\$ (5,259)</u>	<u>\$ 10,316,685</u>	<u>\$ (5,259)</u>
<b>Reserve Fund</b>				
Beginning Balance	\$ 3,506,244	\$ -	\$ 3,506,244	\$ -
Transfers from Revenue Fund	-	-	-	-
Income from Investments	507	(1,843)	507	(1,843)
Transfers to Bond Redemption Acct.	-	-	-	-
Ending Balance	<u>\$ 3,506,751</u>	<u>\$ (1,843)</u>	<u>\$ 3,506,751</u>	<u>\$ (1,843)</u>
<b>Bond Redemption Account</b>				
Beginning Balance	\$ 880,356	\$ -	\$ 880,356	\$ -
Transfers from Revenue Fund	-	-	-	-
Transfers from Reserve Fund	-	-	-	-
Transfers to Replacement Fund	-	-	-	-
Income from Investments	128	(472)	128	(472)
Ending Balance	<u>\$ 880,484</u>	<u>\$ (472)</u>	<u>\$ 880,484</u>	<u>\$ (472)</u>



**Part III - Cash Balances**

	January, 2021 Amount	Variance vs. Budget Positive / (Negative)	Year to Date Amount	Variance vs. Budget Positive / (Negative)
<b>Capital Improvement Fund</b>				
Beginning Balance	\$ 7,824,505	\$ -	\$ 7,824,505	\$ -
From Bond/Note Issue		-	-	-
Income from Investments	1,097	1,097	1,097	1,097
Withdrawals	(1,100,678)	(100,678)	(1,100,678)	(100,678)
Ending Balance	<u>\$ 6,724,924</u>	<u>\$ (99,581)</u>	<u>\$ 6,724,924</u>	<u>\$ (99,581)</u>

**Part IV - Cash Transfers to Special Purpose Funds for 2021**

	2021 Budget	2021 Estimate
Cash Transfers from Revenue Fund:		
To Sinking Fund (for current debt service requirements)	\$ 10,625,550	\$ 10,625,550
To Replacement Fund (2020 max. transfers - \$13,150,273)	12,547,362	12,547,362
To Reserve Fund	-	-
To Bond Redemption Account	-	-
Total Transfers to Special Purpose Funds	<u>\$ 23,172,912</u>	<u>\$ 23,172,912</u>

**Part VII - Share of Market versus Licensed Ferry Services**

Number of Passengers Carried	January Amount	Change vs. Prev. Yr.		Year to Date Amount	Change vs. Prev. Yr.	
<b>Martha's Vineyard</b>						
Steamship Authority	84,220	(22,020)	-20.7%	84,220	(22,020)	-20.7%
Hy-Line						
Regular	0	0	0.0%	0	0	0.0%
High Speed	0	0	0.0%	0	0	0.0%
Subtotal Hy-Line	0	0	0.0%	0	0	0.0%
Falmouth Ferry Service	0	0	0.0%	0	0	0.0%
SeaStreak (New Bedford)	0	0	0.0%	0	0	0.0%
SeaStreak (New York City)	0	0	0.0%	0	0	0.0%
Total *	84,220	(22,020)	-20.7%	84,220	(22,020)	-20.7%
<b>Nantucket</b>						
Steamship Authority						
Regular	11,848	(512)	-4.1%	11,848	(512)	-4.1%
Fast Ferry (Prior to April 2)	673	(750)	-52.7%	673	(750)	-52.7%
Fast Ferry (April 2) (in service 2019)	0	0	0.0%	0	0	0.0%
Fast Ferry (April 3 and after)(in service 2020)	0	0	0.0%	0	0	0.0%
Subtotal - Nantucket	12,521	(1,262)	-9.2%	12,521	(1,262)	-9.2%
Hy-Line						
Regular	0	0	0.0%	0	0	0.0%
HighSpeed (Prior to April 2)	21,804	(14,471)	-39.9%	21,804	(14,471)	-39.9%
HighSpeed (April 2)(IYA in service 2019)	0	0	0.0%	0	0	0.0%
HighSpeed (April 3 & after)(IYA in service 2020)	0	0	0.0%	0	0	0.0%
Subtotal Hy-Line	21,804	(14,471)	-39.9%	21,804	(14,471)	-39.9%
Freedom Cruise Line (Harwich)	0	0	0.0%	0	0	0.0%
SeaStreak (New Bedford)	0	0	0.0%	0	0	0.0%
SeaStreak (New York City)	0	0	0.0%	0	0	0.0%
Total	34,325	(15,733)	-31.4%	34,325	(15,733)	-31.4%

M/V Iyanough in service 04/03/2020 - 01/03/2021 and 04/01/2021 - 01/04/2022.

\* Note: Island Queen passenger service is grandfathered and as such traffic counts are not included .

**Business Summary for the Month of January, 2021**

**Part I - Traffic Statistics**

	Month of January 2020	Month of January 2021	DIFF	%DIFF	YTD through January 2020	YTD through January 2021	DIFF	%DIFF
Number of Passengers Carried								
Martha's Vineyard	106,240	84,220	(22,020)	-20.7%	106,240	84,220	(22,020)	-20.7%
Nantucket								
Regular	12,360	11,848	(512)	-4.1%	12,360	11,848	(512)	-4.1%
Fast Ferry	1,423	673	(750)	-52.7%	1,423	673	(750)	-52.7%
Subtotal - Nantucket	13,783	12,521	(1,262)	-9.2%	13,783	12,521	(1,262)	-9.2%
<b>Total</b>	<b>120,023</b>	<b>96,741</b>	<b>(23,282)</b>	<b>-19.4%</b>	<b>120,023</b>	<b>96,741</b>	<b>(23,282)</b>	<b>-19.4%</b>
Number of Automobiles Carried								
Martha's Vineyard								
Regular	8,076	10,487	2,411	29.9%	8,076	10,487	2,411	29.9%
Excursion	12,942	10,423	(2,519)	-19.5%	12,942	10,423	(2,519)	-19.5%
Subtotal - M. Vineyard	21,018	20,910	(108)	-0.5%	21,018	20,910	(108)	-0.5%
Nantucket								
Regular	865	1,449	584	67.5%	865	1,449	584	67.5%
Excursion	1,806	1,602	(204)	-11.3%	1,806	1,602	(204)	-11.3%
Subtotal - Nantucket	2,671	3,051	380	14.2%	2,671	3,051	380	14.2%
<b>Total</b>	<b>23,689</b>	<b>23,961</b>	<b>272</b>	<b>1.1%</b>	<b>23,689</b>	<b>23,961</b>	<b>272</b>	<b>1.1%</b>
Number of Trucks Carried								
Martha's Vineyard								
Less than 20' - Regular	2,877	3,406	529	18.4%	2,877	3,406	529	18.4%
Less than 20' - Excursion	3,235	2,947	(288)	-8.9%	3,235	2,947	(288)	-8.9%
20' and over	3,476	3,634	158	4.5%	3,476	3,634	158	4.5%
sub-total - M. Vineyard	9,588	9,987	399	4.2%	9,588	9,987	399	4.2%
Nantucket								
Less than 20' - Regular	679	751	72	10.6%	679	751	72	10.6%
Less than 20' - Excursion	775	781	6	0.8%	775	781	6	0.8%
20' and over	2,116	2,171	55	2.6%	2,116	2,171	55	2.6%
sub-total - Nantucket	3,570	3,703	133	3.7%	3,570	3,703	133	3.7%
<b>Total</b>	<b>13,158</b>	<b>13,690</b>	<b>532</b>	<b>4.0%</b>	<b>13,158</b>	<b>13,690</b>	<b>532</b>	<b>4.0%</b>

**Business Summary for the Month of January, 2021**

**Part I - Traffic Statistics**

	Month of January 2020	Month of January 2021	DIFF	%DIFF	YTD through January 2020	YTD through January 2021	DIFF	%DIFF
<b>Number of Cars Parked</b>								
Woods Hole, Falmouth and Cataumet	3,753	2,522	(1,231)	-32.8%	3,753	2,522	(1,231)	-32.8%
Hyannis, Nantucket	552	408	(144)	-26.1%	552	408	(144)	-26.1%
<b>Total</b>	<b>4,305</b>	<b>2,930</b>	<b>(1,375)</b>	<b>-31.9%</b>	<b>4,305</b>	<b>2,930</b>	<b>(1,375)</b>	<b>-31.9%</b>
<b>Average Length of Stay - Cars Parked (Days)</b>								
Woods Hole, Falmouth and Cataumet	1.72	1.82	0.10	5.8%	1.74	1.82	0.08	4.6%
Hyannis, Nantucket	3.22	3.32	0.10	3.1%	2.90	3.32	0.42	14.5%
<b>Total</b>	<b>1.89</b>	<b>2.03</b>	<b>0.14</b>	<b>7.4%</b>	<b>1.89</b>	<b>2.03</b>	<b>0.14</b>	<b>7.4%</b>
<b>Average Revenue per Passenger *</b>								
Martha's Vineyard	\$ 6.74	\$ 7.77	\$ 1.03	15.3%	\$ 6.74	\$ 7.77	\$ 1.03	15.3%
Nantucket	18.32	18.80	0.48	2.6%	18.32	18.80	0.48	2.6%
<b>Total</b>	<b>8.07</b>	<b>9.20</b>	<b>1.13</b>	<b>14.0%</b>	<b>8.07</b>	<b>9.20</b>	<b>1.13</b>	<b>14.0%</b>
<b>Average Revenue per Automobile</b>								
Martha's Vineyard	\$ 31.44	\$ 38.71	\$ 7.27	23.1%	\$ 31.44	\$ 38.71	\$ 7.27	23.1%
Nantucket	81.38	104.71	23.33	28.7%	81.38	104.71	23.33	28.7%
<b>Total</b>	<b>37.07</b>	<b>47.11</b>	<b>10.04</b>	<b>27.1%</b>	<b>37.07</b>	<b>47.11</b>	<b>10.04</b>	<b>27.1%</b>
<b>Average Revenue per Truck</b>								
Martha's Vineyard	\$ 102.95	\$ 117.36	\$ 14.41	14.0%	\$ 102.95	\$ 117.36	\$ 14.41	14.0%
Nantucket	295.70	321.52	25.82	8.7%	295.70	321.52	25.82	8.7%
<b>Total</b>	<b>155.24</b>	<b>172.59</b>	<b>17.35</b>	<b>11.2%</b>	<b>155.24</b>	<b>172.59</b>	<b>17.35</b>	<b>11.2%</b>

\* Excludes any town embarkation fees.

**Business Summary for the Month of January, 2021**

**Part Ila- Net Income (Loss) from Operations (Monthly)**

	January ACTUAL 2020	January ACTUAL 2021	ACTUAL 2021 vs. ACTUAL 2020	January BUDGET 2021	ACTUAL 2021 vs. BUDGET
<b>Vs. 2021 Operating Budget</b>					
<b>Net Income (Loss) from Operations</b>					
Operating Revenues	\$ 4,308,573	\$ 4,696,683	\$ 388,110	\$ 4,649,076	\$ 47,607
Other Income	191,407	212,356	20,949	177,977	34,379
Total Income	4,499,980	4,909,039	409,059	4,827,053	81,986
<b>Operating Expenses</b>					
Fixed Charges and Other Expenses	9,863,166	7,922,701	(1,940,465)	8,799,122	(876,421)
Total Expenses	313,166	360,035	46,869	358,810	1,225
	10,176,332	8,282,736	(1,893,596)	9,157,932	(875,196)
<b>Net Operating Income (Loss)</b>	<b>\$ (5,676,352)</b>	<b>\$ (3,373,697)</b>	<b>\$ 2,302,655</b>	<b>\$ (4,330,879)</b>	<b>\$ 957,181</b>

<b>Operating Revenues:</b>					
Auto Revenue	873,164	\$ 1,132,083	\$ 258,919	\$ 1,026,477	\$ 105,606
Freight Revenue	2,036,362	2,357,692	321,330	2,182,644	175,048
Passenger Revenue	989,221	911,895	(77,326)	1,027,899	(116,004)
Bicycle, Mail, Misc. Voyage Rev.	24,702	690	(24,012)	24,838	(24,148)
Revenue from Terminal Operations	248,094	167,808	(80,286)	249,375	(81,567)
Parking Revenue	99,450	96,165	(3,285)	89,201	6,964
Rents	37,580	30,350	(7,230)	48,642	(18,292)
Sub-Total - Operating Revenue	4,308,573	4,696,683	388,110	4,649,076	47,607
<b>Other Income:</b>					
Interest Income	16,950	174,199	157,249	12,000	162,199
Miscellaneous Income	174,457	38,157	(136,300)	165,977	(127,820)
Sub-Total - Other Income	191,407	212,356	20,949	177,977	34,379
<b>Total Income</b>	<b>\$ 4,499,980</b>	<b>\$ 4,909,039</b>	<b>\$ 409,059</b>	<b>\$ 4,827,053</b>	<b>\$ 81,986</b>

**Part Ila- Net Income (Loss) from Operations (Monthly)**

Vs. 2021 Operating Budget

	January ACTUAL 2020	January ACTUAL 2021	ACTUAL 2021 vs. ACTUAL 2020	January BUDGET 2021	ACTUAL 2021 vs. BUDGET
Operating Expenses:					
Wages	\$ 3,007,568	\$ 2,905,580	\$ (101,988)	\$ 2,965,770	\$ (60,190)
Pensions Health & Welfare	1,140,813	1,171,049	30,236	1,385,385	(214,336)
Payroll Taxes	178,878	158,334	(20,544)	220,704	(62,370)
Depreciation	1,056,384	1,151,249	94,865	1,142,598	8,651
Vessel Fuel Oil	402,832	314,877	(87,955)	315,908	(1,031)
Insurance	352,317	363,077	10,760	365,006	(1,929)
Direct Vessel Maintenance (Excl'd. Wages)	2,621,459	735,593	(1,885,866)	1,238,582	(502,989)
Direct Terminal Maintenance (Excl'd. Wages)	35,441	41,125	5,684	83,950	(42,825)
Utilities	189,367	208,096	18,729	175,118	32,978
Other	878,107	873,721	(4,386)	906,101	(32,380)
Sub-Total - Operating Expenses	9,863,166	7,922,701	(1,940,465)	8,799,122	(876,421)
Fixed Charges and Other Expenses:					
Bond Interest & Expense	271,887	320,892	49,005	321,396	(504)
Misc. Charges or Deductions	41,279	39,143	(2,136)	37,414	1,729
Sub-Total - Other Expenses	313,166	360,035	46,869	358,810	1,225
Total Expenses	\$ 10,176,332	\$ 8,282,736	\$ (1,893,596)	\$ 9,157,932	\$ (875,196)
Net Operating Income (Loss)	\$ (5,676,352)	\$ (3,373,697)	\$ 2,302,655	\$ (4,330,879)	\$ 957,182

### **Budgetary Management Discussion and Analysis - January, 2021**

Total operating revenues for January increased by \$47,607 or 1.0% versus the amount projected in the 2021 operating budget, for a total of \$4,696,683 in operating revenues. Passenger revenues for the month were down \$116,000 versus budget projections, which represents a decrease of 11.3%. Automobile revenues were up \$106,000 or 10.3%, versus budget projections for January. Freight revenues were up \$175,000, or 8.0%, versus budget projections for the month. Parking revenues were up during January by \$7,000, or 7.8%. Concession revenues in January were down \$24,000 or 100.00%. Rent revenues from barge unloading and rental car space were down \$18,000 or 37.6% in January versus budget.

During January, the vessels made a combined 1,465 trips. This represents a decrease of 119 trips, or 7.5%, versus the originally budgeted amount for the month. On the Vineyard route, 8 trips were canceled for mechanical reasons, 14 for weather related and 87 for traffic demands while 0 unscheduled trips and 0 available trips were added. On the Nantucket route, 2 trips were canceled for mechanical reasons, 18 for weather related and 8 for traffic demands while 18 unscheduled and 0 available trips were added.

Total operating expenses for the month were down \$876,421 or 10.0% versus the amount projected in the 2021 budget for a total of \$7,922,701. Maintenance expenses for the month were down \$583,000, or 26.5%, versus budget. Repair expenses for the M/V Martha's Vineyard were down \$6,000; repairs for the M/V Woods Hole were down \$197,000; repairs on the M/V Governor were up \$10,000; the M/V Sankaty repair expenses were down \$1,000; repairs for the M/V Nantucket were down \$272,000; repair expenses for the M/V Katama were up \$5,000; repairs on the M/V Eagle were down \$48,000; repairs on the M/V Gay Head were down \$13,000; repairs for the M/V Island Home were up \$73,000; and repairs for the M/V Iyanough were down \$125,000 versus budget. Repairs to buildings and structures were down \$44,000, repairs to motor vehicles were down \$48,000 and repairs to office and terminal equipment was up \$72,000 for the month.

Vessel fuel expense of \$315,000 was down by \$1,000 or 0.3% versus budget estimates. The average actual cost per gallon for vessel fuel oil in January was \$1.80, including net hedging costs, while the budgeted cost was \$1.757 per gallon. During January, the vessels logged 19,112 miles, which were 1,172 miles lower than budget, or a decrease of 0.3%. During January, 177,000 gallons of vessel fuel were consumed. This represents a decrease of 3,000 gallons, or 1.6%, versus budget. Insurance expenses were down \$13,000 versus budget. General administrative expenses for the month were down \$250,000 or 11.6%. Legal expense was down \$9,000; pension expense was down \$72,000, health care expense was down \$146,000, Families First Coronavirus Response Act paid sick leave costs were up \$2,000, disability contributions were up \$25,000, unemployment contributions were down \$23,000, training expense was up \$12,000 and credit card expense was up \$6,000.

Other income, including interest income, debt premium and license income, totaled \$212,356 and was \$34,379 higher than budget projections. Income deductions, including interest on funded debt and pension withdrawal, totaled \$360,035 and were \$1,225 higher than budget. The Authority's net operating loss for the month of January, including other income, income deductions and bond interest expense, was \$3,373,697 or \$957,182 lower than the budgeted net loss for the month.

**Business Summary for the Year-To-Date as of January, 2021 (Continued)**

**Part IIb- Net Income (Loss) from Operations (Year to Date)**

**Vs. 2021 Operating Budget**

	YTD - January ACTUAL 2020	YTD - January ACTUAL 2021	YTD ACTUAL 2021 vs. YTD ACTUAL 2020	YTD - January BUDGET 2021	YTD ACTUAL 2021 vs. YTD BUDGET
Net Income (Loss) from Operations					
Operating Revenues	\$ 4,308,573	\$ 4,696,683	\$ 388,110	\$ 4,649,076	\$ 47,607
Other Income	191,407	212,356	20,949	177,977	34,379
Total Income	4,499,980	4,909,039	409,059	4,827,053	81,986
Operating Expenses	9,863,166	7,922,701	(1,940,465)	8,799,122	(876,421)
Fixed Charges and Other Expenses	313,166	360,035	46,869	358,810	1,225
Total Expenses	10,176,332	8,282,736	(1,893,596)	9,157,932	(875,196)
Net Operating Income (Loss)	\$ (5,676,352)	\$ (3,373,697)	\$ 2,302,655	\$ (4,330,879)	\$ 957,182

**Operating Revenues:**

Auto Revenue	\$ 873,164	\$ 1,132,083	\$ 258,919	\$ 1,026,477	\$ 105,606
Freight Revenue	2,036,362	2,357,692	321,330	2,182,644	175,048
Passenger Revenue	989,221	911,895	(77,326)	1,027,899	(116,004)
Bicycle, Mail, Misc. Voyage Rev.	24,702	690	(24,012)	24,838	(24,148)
Revenue from Terminal Operations	248,094	167,808	(80,286)	249,375	(81,567)
Parking Revenue	99,450	96,165	(3,285)	89,201	6,964
Rents	37,580	30,350	(7,230)	48,642	(18,292)
Sub-Total - Operating Revenue	4,308,573	4,696,683	388,110	4,649,076	47,607
Other Income:					
Interest Income	16,950	174,199	157,249	12,000	162,199
Miscellaneous Income	174,457	38,157	(136,300)	165,977	(127,820)
Sub-Total - Other Income	191,407	212,356	20,949	177,977	34,379
Total Income	\$ 4,499,980	\$ 4,909,039	\$ 409,059	\$ 4,827,053	\$ 81,986



**Part IIb- Net Income (Loss) from Operations (Year to Date)**

**Vs. 2021 Operating Budget**

	YTD - January ACTUAL 2020	YTD - January ACTUAL 2021	YTD ACTUAL 2021 vs. YTD ACTUAL 2020	YTD - January BUDGET 2021	YTD ACTUAL 2021 vs. YTD BUDGET
Operating Expenses:					
Wages	\$ 3,007,568	2,905,580	\$ (101,988)	2,965,770	\$ (60,190)
Pensions Health & Welfare	1,140,813	1,171,049	30,236	1,385,385	(214,336)
Payroll Taxes	178,878	158,334	(20,544)	220,704	(62,370)
Depreciation	1,056,384	1,151,249	94,865	1,142,598	8,651
Vessel Fuel Oil	402,832	314,877	(87,955)	315,908	(1,031)
Insurance	352,317	363,077	10,760	365,006	(1,929)
Direct Vessel Maintenance (Excl'd. Wages)	2,621,459	735,593	(1,885,866)	1,238,582	(502,989)
Direct Terminal Maintenance (Excl'd. Wages)	35,441	41,125	5,684	83,950	(42,825)
Utilities	189,367	208,096	18,729	175,118	32,978
Other	878,107	873,721	(4,386)	906,101	(32,380)
Sub-Total - Operating Expenses	9,863,166	7,922,701	(1,940,465)	8,799,122	(876,421)
Fixed Charges and Other Expenses:					
Bond Interest & Expense	271,887	320,892	49,005	321,396	(504)
Misc. Charges or Deductions	41,279	39,143	(2,136)	37,414	1,729
Sub-Total - Other Expenses	313,166	360,035	46,869	358,810	1,225
Total Expenses	10,176,332	8,282,736	(1,893,596)	9,157,932	(875,196)
Net Operating Income (Loss)	(5,676,352)	(3,373,697)	2,302,655	(4,330,879)	957,182

**Budgetary Management Discussion and Analysis: January - January, 2021**

Year to date total operating revenues increased by \$47,607 or 1.0% versus the amount projected in the 2021 operating budget, for a total of \$4,696,683 in operating revenues. Passenger revenues for the year to date were down \$116,000 versus budget projections, which represents a 11.3% decrease. Automobile revenues were up \$106,000 or 10.3%, versus budget projections. Freight revenues were up \$175,000 or 8.0%, versus budget projections. Parking revenues were up, \$7,000, or 7.8%, compared to budget forecast. Rent revenues from barge unloading and rental car space were down \$18,000, or 37.6%, versus budget.

Year to date, the vessels made a combined 1,465 trips. This represents a decrease of 119 trips, or 7.5%, versus budget. On the Vineyard route, 8 trips were canceled for mechanical reasons, 14 for weather related and 87 for traffic demands, while 0 unscheduled trips and 0 available trips were added. On the Nantucket route, 2 trips were canceled for mechanical reasons, 18 for weather related and 8 for traffic demands, while 18 unscheduled trips and 0 available trips were added.

Year to date operating expenses were down \$876,421 or 10.0%, versus the amount projected in the 2021 budget for a total of \$7,992,701. Maintenance expenses for the year are down \$583,000 or 26.5%, versus budget. Repairs for the M/V Martha's Vineyard were down \$6,000; the M/V Woods Hole repair expense was down \$197,000; repair expenses for the M/V Governor were up \$10,000; repair expenses for the M/V Sankaty were down \$1,000; M/V Nantucket repair expenses were down \$272,000; repairs on the M/V Katama are up \$5,000; repair expenses for the M/V Eagle were down \$48,000; repairs on the M/V Gay Head were down \$13,000; M/V Island Home repair expenses were up \$73,000; and repair expenses for the M/V Iyanough were down \$125,000. Terminal and dolphin and dock repairs in Vineyard Haven were down \$2,000; while Oak Bluffs were down \$3,000; Woods Hole were down \$14,000; Nantucket were down \$4,000 and were down in Hyannis by \$38,000. Motor vehicle repairs were down \$48,000 and other maintenance expense was up by \$78,000.

Vessel fuel expense of \$315,000 was down \$1,000 or 0.3%, below budget estimates. The average actual cost per gallon for vessel fuel oil was \$1.800 including net hedging costs, while the budgeted cost was \$1.757 per gallon. 19,112 vessel miles have been logged in the year, a decrease of 1,172 miles, or 5.8%, versus budget. 177,000 gallons of vessel fuel were consumed. This represents a decrease of 3,000 gallons or 1.6% versus budget. General administrative expenses for the year were down 11.6%, or \$250,000. Legal expense was down \$9,000, pension expense was down \$72,000, health care costs were down \$146,000, Families First Coronavirus Response Act paid sick leave costs were up \$2,000, disability contributions were up \$25,000, and unemployment contributions were down \$23,000. Training expense was up \$12,000 and credit card fees were up \$6,000.

Other income, including interest income, debt premium, and license income, totaled \$212,356 and was \$34,379 lower than budget projections. Income deductions, including interest on funded debt and pension withdrawal, totaled \$360,035 and were \$1,225 higher than budget. Year to date, the Authority's net operating loss, including other income, income deductions and bond interest expense, was \$3,373,697 or \$957,182 lower than budget projections.

**Part III - Cash Balances**

**Cash Balance - Operations Fund**

Beginning Balance				
Cash Receipts	\$ 12,691,469	\$ 941,469	\$ 12,691,469	\$ 941,469
Cash Receipts - Grants	15,831,437	637,414	15,831,437	637,414
Cash Receipts - Capital Projects	-	-	-	-
Cash Disbursements	-	-	-	-
Cash Disbursements - Capital Projects	(7,533,836)	118,180	(7,533,836)	118,180
Transfers to Special Purpose Funds	-	-	-	-
Ending Balance	-	-	-	-
	<u>\$ 20,989,070</u>	<u>\$ 1,697,063</u>	<u>\$ 20,989,070</u>	<u>\$ 1,697,063</u>

**Cash Balance - Special-Purpose Funds**

**Sinking Fund**

Beginning Balance				
Transfers from Revenue Fund	\$ 9,635,184	\$ -	\$ 9,635,184	\$ -
Income from Investments	-	-	-	-
Accrued Interest Received	1,393	(4,557)	1,393	(4,557)
Debt Service Payments	-	-	-	-
Ending Balance	-	-	-	-
	<u>\$ 9,636,577</u>	<u>\$ (4,557)</u>	<u>\$ 9,636,577</u>	<u>\$ (4,557)</u>

**Replacement Fund**

Beginning Balance				
Transfers from Revenue Fund	\$ 10,315,194	\$ -	\$ 10,315,194	\$ -
Transfers from Bond Redemption	-	-	-	-
Proceeds from Disposal of Property	-	-	-	-
Income from Investments	1,491	(5,259)	1,491	(5,259)
Withdrawals	-	-	-	-
Ending Balance	-	-	-	-
	<u>\$ 10,316,685</u>	<u>\$ (5,259)</u>	<u>\$ 10,316,685</u>	<u>\$ (5,259)</u>

**Reserve Fund**

Beginning Balance				
Transfers from Revenue Fund	\$ 3,506,244	\$ -	\$ 3,506,244	\$ -
Income from Investments	-	-	-	-
Transfers to Bond Redemption Acct.	507	(1,843)	507	(1,843)
Ending Balance	-	-	-	-
	<u>\$ 3,506,751</u>	<u>\$ (1,843)</u>	<u>\$ 3,506,751</u>	<u>\$ (1,843)</u>

**Bond Redemption Account**

Beginning Balance				
Transfers from Revenue Fund	\$ 880,356	\$ -	\$ 880,356	\$ -
Transfers from Reserve Fund	-	-	-	-
Transfers to Replacement Fund	-	-	-	-
Income from Investments	128	(472)	128	(472)
Ending Balance	-	-	-	-
	<u>\$ 880,484</u>	<u>\$ (472)</u>	<u>\$ 880,484</u>	<u>\$ (472)</u>

Part III - Cash Balances

	January, 2021 Amount	Variance vs. Budget Positive / (Negative)	Year to Date Amount	Variance vs. Budget Positive / (Negative)
<b>Capital Improvement Fund</b>				
Beginning Balance	\$ 7,824,505	\$ -	\$ 7,824,505	\$ -
From Bond/Note Issue		-	-	-
Income from Investments	1,097	1,097	1,097	1,097
Withdrawals	(1,100,678)	(100,678)	(1,100,678)	(100,678)
Ending Balance	<u>\$ 6,724,924</u>	<u>\$ (99,581)</u>	<u>\$ 6,724,924</u>	<u>\$ (99,581)</u>

Part IV - Cash Transfers to Special Purpose Funds for 2021

	2021 Budget	2021 Estimate
Cash Transfers from Revenue Fund:		
To Sinking Fund (for current debt service requirements)	\$ 10,625,550	\$ 10,625,550
To Replacement Fund (2020 max. transfers - \$13,150,273)	12,547,362	12,547,362
To Reserve Fund	-	-
To Bond Redemption Account	-	-
Total Transfers to Special Purpose Funds	<u>\$ 23,172,912</u>	<u>\$ 23,172,912</u>

**Part VII - Share of Market versus Licensed Ferry Services**

Number of Passengers Carried	January Amount	Change vs. Prev. Yr.	Year to Date Amount	Change vs. Prev. Yr.
<b>Martha's Vineyard</b>	84,220	(22,020)	84,220	(22,020)
Steamship Authority				
Hy-Line				
Regular	0	0	0	0
High Speed	0	0.0%	0	0.0%
Subtotal Hy-Line	0	0.0%	0	0.0%
Falmouth Ferry Service	0	0	0	0
SeaStreak (New Bedford)	0	0	0	0
SeaStreak (New York City)	0	0	0	0
<b>Total *</b>	<b>84,220</b>	<b>(22,020)</b>	<b>84,220</b>	<b>(22,020)</b>
<b>Nantucket</b>				
Steamship Authority				
Regular	11,848	(512)	11,848	(512)
Fast Ferry (Prior to April 2)	673	(750)	673	(750)
Fast Ferry (April 2) (in service 2019)	0	0	0	0
Fast Ferry (April 3 and after)(in service 2020)	0	0	0	0
Subtotal - Nantucket	12,521	(1,262)	12,521	(1,262)
Hy-Line				
Regular	0	0	0	0
HighSpeed (Prior to April 2)	21,804	(14,471)	21,804	(14,471)
HighSpeed (April 2)(IYA in service 2019)	0	0	0	0
HighSpeed (April 3 & after)(IYA in service 2020)	0	0	0	0
Subtotal Hy-Line	21,804	(14,471)	21,804	(14,471)
Freedom Cruise Line (Harwich)	0	0	0	0
SeaStreak (New Bedford)	0	0	0	0
SeaStreak (New York City)	0	0	0	0
<b>Total</b>	<b>34,325</b>	<b>(15,733)</b>	<b>34,325</b>	<b>(15,733)</b>

MV Iyanough in service 04/03/2020 - 01/03/2021 and 04/01/2021 - 01/04/2022.

\* Note: Island Queen passenger service is grandfathered and as such traffic counts are not included .

PORT COUNCIL MEETING – MARCH 3, 2021

WOODS HOLE, MARTHA'S VINEYARD AND NANTUCKET  
STEAMSHIP AUTHORITY

# Woods Hole Terminal Reconstruction Project update



February 22, 2021





February 24, 2021

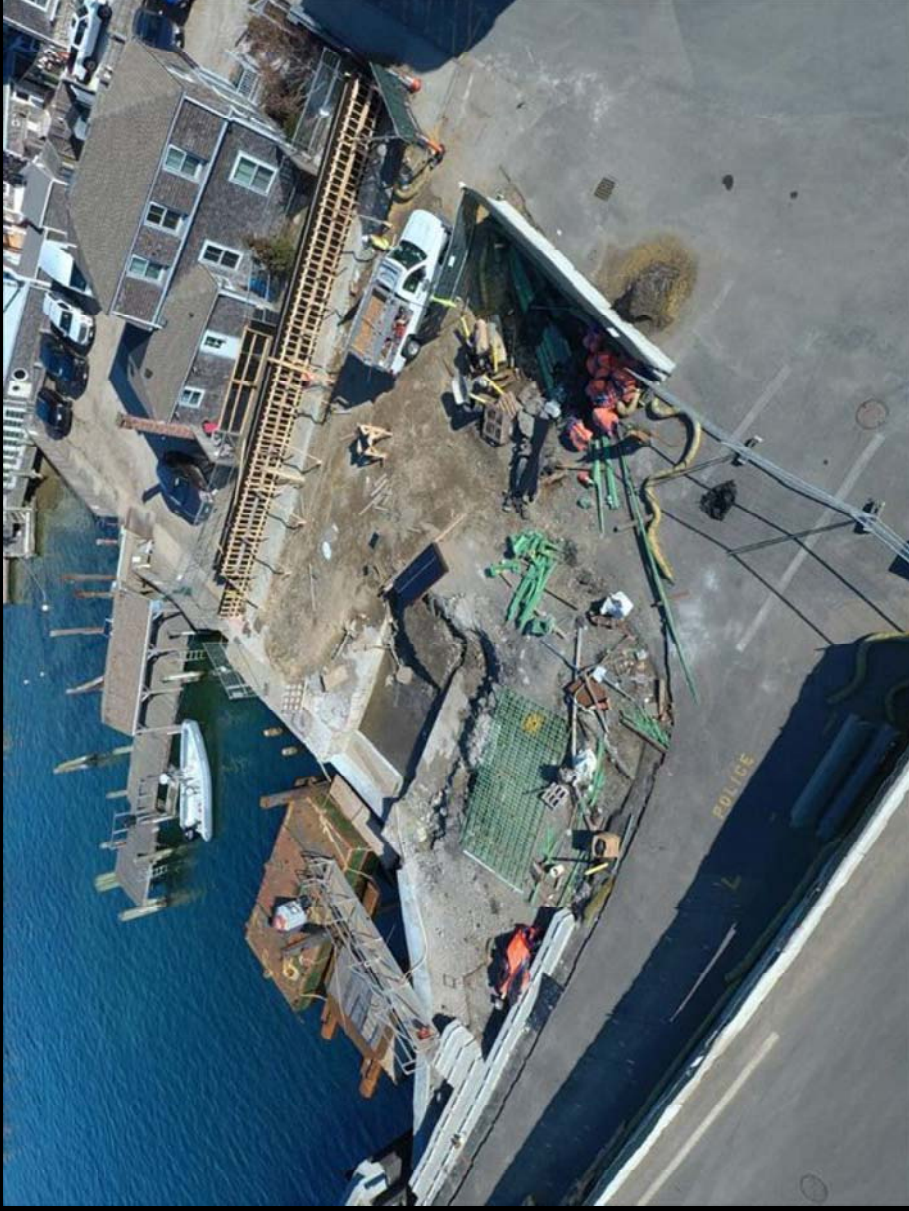




February 25, 2021



February 26, 2021

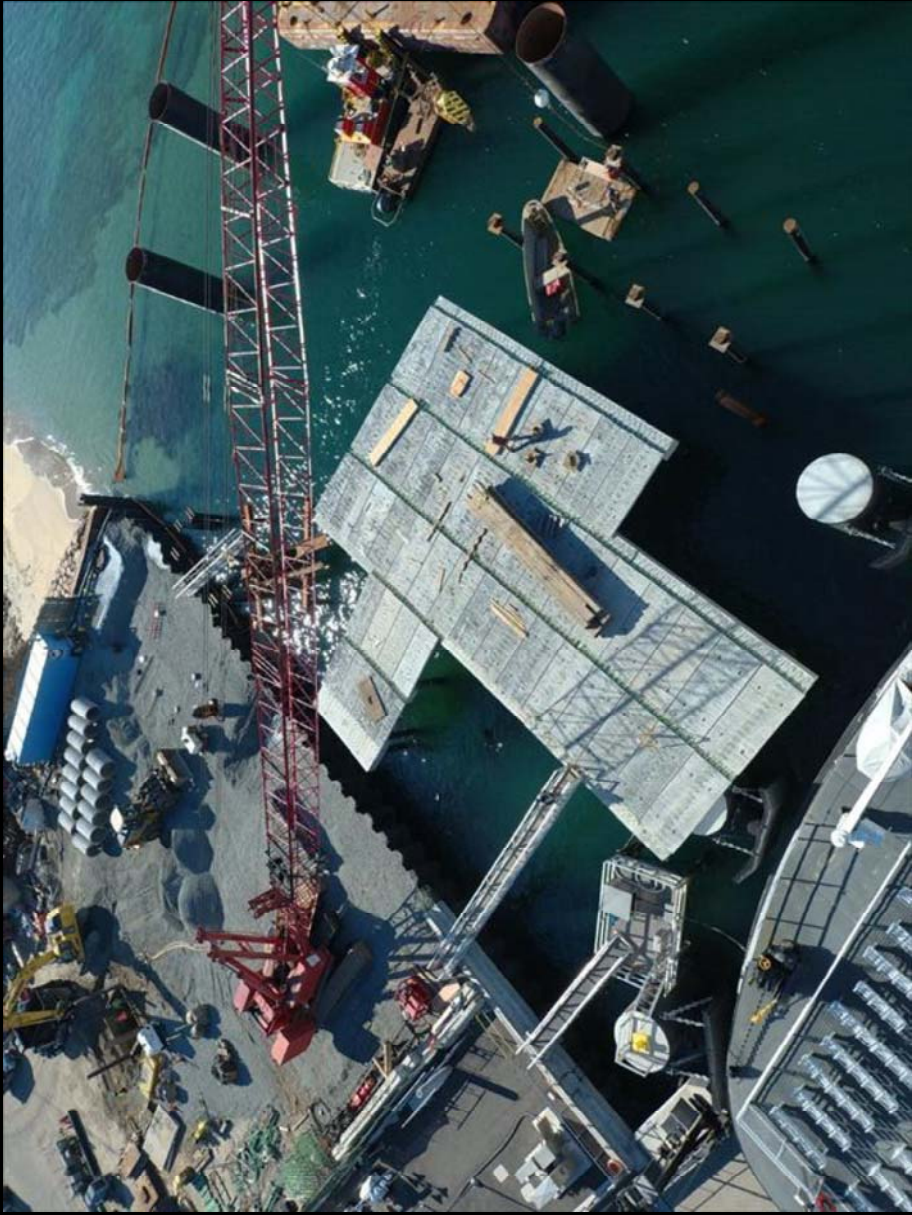


February 26, 2021



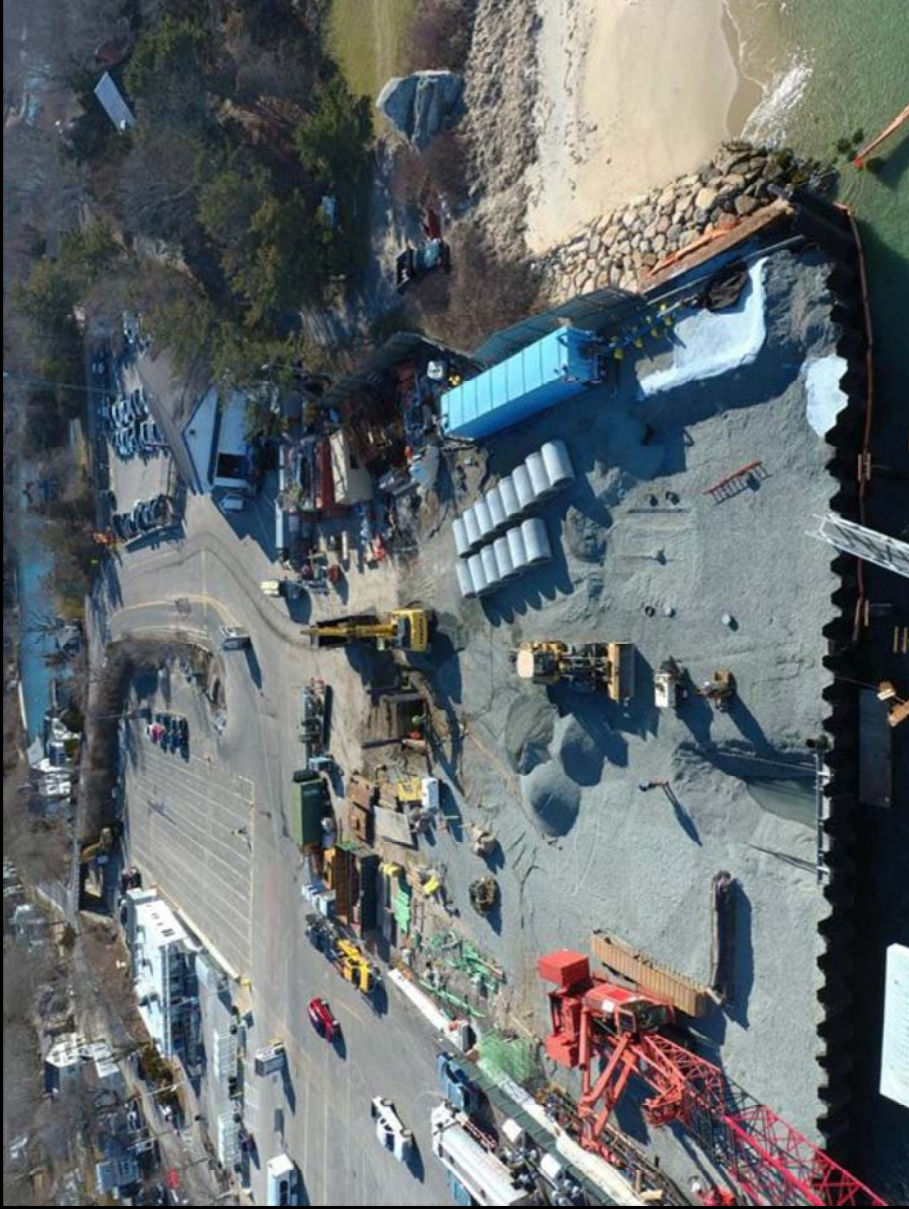


February 26, 2021



February 26, 2021





February 26, 2021



February 26, 2021

*MV Woods Hole*  
Bow View Prior To Launching





## *MV Woods Hole* Side Profile before Launching



## *MV Woods Hole* Transom



*MV Woods Hole*  
New Thrordon Bearings installed in Strut



*MV Woods Hole*  
Controllable Pitch Propellers Installed





*MV Woods Hole*  
New Fuel Oil Purifier in Operation



## *MV Woods Hole* Dry Dock Highlights

- Installation of a new Diesel Oil Purifier System
- Overhaul of (2) Generators & Alternators
- Overhaul of Port and Starboard Tail shafts and Bearings
- Overhaul of Bow Thruster

## MV Woods Hole Dry Dock Repair Contract Items

Contract Item	Item Description	Credit	Cost
001	Dry Docking & Undocking		\$29,800
002A, 002B, 002D	Hull Internals: Inspection & Repair, UT Survey & Bilge Cleaning		7,400
003A, 003B, 003C, 003D	Hull: Clean, Prepare, Paint, Replace Anodes, Grit Blasting ,keel coolers		185,970
004A, 004B, 004C	Temporary Services & Slops		13,850
005	Sea Valve Cleaning & Overhaul		4,900
006A, 006B, 006C, 006D,	Shafts, Bearings & couplings, shaft removals & repairs, cutlass bearings		43,720
006E	Shaft Seals & 5 year overhaul		5,628
007	Port & Stbd Propeller Removal, Transport, Repairs and Re-installation		13,220
008A, 008B & 008C	Rudder Brg Clearances, Inspections and replacements		62,642
009	Hull Plate Steel Renewal	19,000	19,000
010	Coatings & surface preparation above rub rail		80,170
011	Tech Data & Reports		
012	Fuel Oil Purifier Installation		63,198
013	Generators, Alternator and Governor Overhaul		138,634
014	Bow Thruster Overhaul		50,770
015	Ballast Tank Inspections and Cleaning		7,720
016	Anchor Chain & Wire Inspections		3,360
	<b><u>Vessel Transportation</u></b>	<b>22,000</b>	<b>22,000</b>
	<b><u>Total Contract Price and Credits</u></b>	<b>41,000</b>	<b>751,982</b>
CO 001	Ballast Water Disposal		5,600
CO 002	Blast and Coat Freight Deck		99,797
CO 003	New Ladder to access bow thruster for maintenance		8,000
CO 004	New Freight Deck Cleats		4,896
CO 005, CO 006	Draft Marks, Replace Trip Brackets,		9,837
CO 007, CO 008	Thordon Bearings and Shaft Repairs		51,372
CO 009, CO 010	Clean, Test Main Breakers, New Wire for Anchor Windlass		17,000
	<b><u>Total Change Orders</u></b>		<b>196,503</b>
	<b>Grand Total Contract Items, Credits and Change Orders</b>		<b>907,485</b>

# Preliminary Draft of the Proposed 2022 Operating Schedules

Port Council March 3,2021



# Martha's Vineyard Route

**2021 Dates**  
**Raised cell indicates vessel berths on-island**  
**All vessels triple crewed unless indicated**

01/04 – 01/09	Martha's Vineyard	Island Home	Katama	
01/04 – 02/23	Martha's Vineyard	Nantucket	Katama	
02/24 – 03/31	Martha's Vineyard	Island Home	Katama	

04/01 – 05/15	Martha's Vineyard	Island Home	Woods Hole	
05/16 – 05/18	Nantucket	Island Home	Woods Hole	

05/19 – 06/23	Martha's Vineyard or Nantucket	Island Home or Nantucket	Woods Hole	Governor
---------------	-----------------------------------	-----------------------------	------------	----------

06/24 – 09/09	Martha's Vineyard	Island Home	Nantucket	Governor	Sankaty (single crew)
---------------	-------------------	-------------	-----------	----------	--------------------------

09/10 – 10/18	Nantucket	Island Home	Katama	Governor
---------------	-----------	-------------	--------	----------

10/19 – 11/23	Nantucket	Island Home	Katama	
11/24 – 01/04	Martha's Vineyard	Island Home	Katama	

**2022 Dates**  
**Raised cell indicates vessel berths on-island**  
**All vessels triple crewed unless indicated**

01/05 – 01/10	Martha's Vineyard	Island Home	Katama	
01/11 – 02/15	Martha's Vineyard	Nantucket	Katama	
02/16 – 03/29	Martha's Vineyard	Nantucket	Katama	

03/30 – 05/16	Martha's Vineyard	Island Home	Woods Hole	
---------------	-------------------	-------------	------------	--

05/17 – 06/21	Martha's Vineyard or Nantucket	Island Home or Nantucket	Woods Hole	Governor
---------------	-----------------------------------	-----------------------------	------------	----------

06/22 – 09/07	Martha's Vineyard	Island Home	Nantucket	Governor	Sankaty (single crew)
---------------	-------------------	-------------	-----------	----------	--------------------------

09/08 – 10/19	Nantucket	Island Home	Katama	Governor
---------------	-----------	-------------	--------	----------

10/20 – 10/22	Nantucket	Island Home	Katama	
10/23 – 01/02	Martha's Vineyard	Island Home	Katama	

# Nantucket Route

## 2021 Dates

**Raised cell indicates vessel berths on-island**  
**All vessels triple crewed unless indicated**

01/04 – 01/09	Nantucket	Woods Hole
01/10 – 03/31	Eagle	Gay Head

04/01 – 05/18	Eagle	Gay Head	Sankaty (2 single crews)	Iyanough (double crew)
---------------	-------	----------	-----------------------------	---------------------------

05/19 – 05/27	Eagle or Nantucket	Gay Head	Sankaty (2 single crews)	Iyanough (double crew)
05/28 – 06/02	Eagle	Gay Head	Nantucket	Iyanough (double crew)
06/03 – 06/23	Eagle or Nantucket	Gay Head	Sankaty (2 single crews)	Iyanough (double crew)

06/24 – 07/02	Eagle	Gay Head	Woods Hole	Iyanough
07/03 – 09/09	Eagle	Katama	Woods Hole	Iyanough

09/10 – 10/18	Eagle	Gay Head (2 single crews)	Woods Hole	Iyanough
---------------	-------	------------------------------	------------	----------

10/19 – 12/02	Eagle	Woods Hole	Iyanough (double crew)
12/03 – 01/04	Nantucket	Woods Hole	Iyanough (double crew)

## 2022 Dates

**Raised cell indicates vessel berths on-island**  
**All vessels triple crewed unless indicated**

01/05 – 01/10	Nantucket	Woods Hole
01/11 – 02/15	Eagle	Gay Head
02/16 – 03/29	Eagle	Gay Head

03/30 – 05/16	Eagle	Gay Head	Sankaty (2 single crews)	Iyanough (double crew)
---------------	-------	----------	-----------------------------	---------------------------

05/17 – 05/25	Eagle or Nantucket	Gay Head	Sankaty (2 single crews)	Iyanough (double crew)
05/26 – 05/31	Eagle	Gay Head	Nantucket	Iyanough (double crew)
06/01 – 06/21	Eagle or Nantucket	Gay Head	Sankaty (2 single crews)	Iyanough (double crew)

06/22 – 08/08	Eagle	Gay Head	Woods Hole	Iyanough
08/09 – 09/07	Eagle	Katama	Woods Hole	Iyanough

09/08 – 10/19	Eagle	Gay Head (2 single crews)	Woods Hole	Iyanough
---------------	-------	------------------------------	------------	----------

10/20 – 10/22	Eagle	Woods Hole	Iyanough (double crew)
10/23 – 01/02	Nantucket	Woods Hole	Iyanough (double crew)

**2022**  
**Martha's Vineyard**

**01/05/2022 - 02/15/2022**

TRIP			LV	WH	DUE	VH	VESSEL		TRIP	LV	VH	DUE		WH
Daily							MAR		6		6:00 AM			6:45 AM
Mon-Fri	5	***	6:00 AM		6:45 AM		IHM/NAN							
Daily							IHM/NAN		8		7:00 AM			7:45 AM
<b>Mon-Sat</b>	<b>203</b>	<b>%</b>	<b>6:30 AM</b>		<b>7:15 AM</b>	<b>HAZ/M-Sat</b>	<b>KAT</b>		<b>204</b>	<b>%</b>	<b>7:30 AM</b>		<b>8:15 AM</b>	<b>HAZ/Wed</b>
Daily			7		7:00 AM	7:45 AM	MAR		10		8:15 AM			9:00 AM
Daily			9		8:15 AM	9:00 AM	IHM/NAN		12		9:30 AM			10:15 AM
<b>Daily</b>	<b>207</b>		<b>8:35 AM</b>		<b>9:20 AM</b>	<b>HAZ/M-F</b>	<b>KAT</b>		<b>208</b>		<b>9:50 AM</b>		<b>10:35 AM</b>	<b>HAZ/M-Sat</b>
Daily			11		9:30 AM	10:15 AM	MAR		14		10:45 AM			11:30 AM
Daily			13		10:45 AM	11:30 AM	IHM/NAN		16		12:00 PM			12:45 PM
<b>Daily</b>	<b>211</b>		<b>11:05 AM</b>		<b>11:50 AM</b>		<b>KAT</b>		<b>212</b>		<b>12:20 PM</b>		<b>1:05 PM</b>	<b>HAZ/M-F</b>
Daily			15		12:00 PM	12:45 PM	MAR		18		1:15 PM			2:00 PM
Daily			17		1:15 PM	2:00 PM	IHM/NAN		20		2:30 PM			3:15 PM
<b>Daily</b>	<b>215</b>		<b>1:35 PM</b>		<b>2:20 PM</b>	<b>HAZ/Wed</b>	<b>KAT</b>		<b>216</b>		<b>2:50 PM</b>		<b>3:35 PM</b>	
Daily			19		2:30 PM	3:15 PM	MAR		22		3:45 PM			4:30 PM
Daily			21		3:45 PM	4:30 PM	IHM/NAN		24		5:00 PM			5:45 PM
<b>Daily</b>	<b>219</b>		<b>4:05 PM</b>		<b>4:50 PM</b>		<b>KAT</b>		<b>220</b>		<b>5:20 PM</b>		<b>6:05 PM</b>	
Daily			23		5:00 PM	5:45 PM	MAR		26		6:15 PM			7:00 PM
Daily			25		6:15 PM	7:00 PM	IHM/NAN		28		7:15 PM			8:00 PM
	<b>223</b>	<b>#</b>	<b>6:30 PM</b>		<b>7:15 PM</b>		<b>KAT</b>		<b>224</b>	<b>#</b>	<b>7:30 PM</b>		<b>8:15 PM</b>	
Daily			27		7:30 PM	8:15 PM	MAR							
F,S,S & H							MAR		30	<b>**</b>	8:30 PM			9:15 PM
Daily			29		8:30 PM	9:15 PM	IHM/NAN							
Sun-Thur							IHM/NAN		32	<b>****</b>	9:30 PM			10:15 PM
	<b>227</b>	<b>#</b>	<b>8:45 PM</b>		<b>9:30 PM</b>		<b>KAT</b>		<b>228</b>	<b>#</b>	<b>9:45 PM</b>		<b>10:30 PM</b>	
F,S,S & H			31	<b>**</b>	9:45 PM	10:30 PM	MAR							

M/V Island Home 01/05/2022 - 01/10/2022

M/V Nantucket 01/11/2022 - 02/15/2022

**Bold indicates freight vessel - limited passenger capacity.**

**Freight vessel trips will not appear on pocket schedules or color brochures.**

During peak travel periods, such as school vacation weeks, unscheduled trips may be added to meet traffic demands.

\*\* Operates Fridays, Saturdays, Sundays & Holiday (01/17)

\*\*\* Operates Monday thru Friday

\*\*\*\* Operates Sunday thru Thursday

% Trips 203 and 204 are available to operate on Sundays, if needed.

# Unscheduled freight trips available to operate, if needed.

M/V Martha's Vineyard

Triple crew - Operates Monday through Thursday from 6:00am to 8:15pm and Friday, Saturday, Sunday and Holiday from 6:00am to 10:30pm.

M/V Island Home or  
M/V Nantucket

Triple crew - Operates Monday through Thursday from 6:00am to 10:15pm,  
Operates Friday from 6:00am to 9:15pm,  
Operates Saturday from 7:00am to 9:15pm,  
Operates Sunday from 7:00am to 10:15pm.

M/V Katama

Triple crew - Operates Monday through Saturday from 6:30am to 6:05pm.  
Operates Sunday from 8:35am to 6:05pm.

**2022**  
**Martha's Vineyard**

**02/16/2022 - 03/29/2022**

TRIP		LV	WH	DUE	VH	VESSEL		TRIP	LV	VH	DUE	WH
						KAT	200	%	5:30 AM		6:15 AM	
Daily						MAR	6		6:00 AM		6:45 AM	
Daily	5		6:00 AM		6:45 AM	NAN	8		7:00 AM		7:45 AM	
Mon-Sat	203	%	6:30 AM		7:15 AM	HAZ/M-Sat	KAT	204	7:30 AM		8:15 AM	HAZ/Wed
Daily	7		7:00 AM		7:45 AM	MAR	10		8:15 AM		9:00 AM	
Daily	9		8:15 AM		9:00 AM	NAN	12		9:30 AM		10:15 AM	
Daily	207		8:35 AM		9:20 AM	HAZ/M-F	KAT	208	9:50 AM		10:35 AM	HAZ/M-Sat
Daily	11		9:30 AM		10:15 AM	MAR	14		10:45 AM		11:30 AM	
Daily	13		10:45 AM		11:30 AM	NAN	16		12:00 PM		12:45 PM	
Daily	211		11:05 AM		11:50 AM	KAT	212		12:20 PM		1:05 PM	HAZ/M-F
Daily	15		12:00 PM		12:45 PM	MAR	18		1:15 PM		2:00 PM	
Daily	17		1:15 PM		2:00 PM	NAN	20		2:30 PM		3:15 PM	
Daily	215		1:35 PM		2:20 PM	HAZ/Wed	KAT	216	2:50 PM		3:35 PM	
Daily	19		2:30 PM		3:15 PM	MAR	22		3:45 PM		4:30 PM	
Daily	21		3:45 PM		4:30 PM	NAN	24		5:00 PM		5:45 PM	
Daily	219		4:05 PM		4:50 PM	KAT	220		5:20 PM		6:05 PM	
Daily	23		5:00 PM		5:45 PM	MAR	26		6:15 PM		7:00 PM	
Daily	25		6:15 PM		7:00 PM	NAN	28		7:15 PM		8:00 PM	
Mon-Sat	223		6:30 PM		7:15 PM	KAT						
						KAT	224	#	7:30 PM		8:15 PM	
Daily	27		7:30 PM		8:15 PM	MAR	30		8:30 PM		9:15 PM	
Daily	29		8:30 PM		9:15 PM	NAN	32		9:30 PM		10:15 PM	
	227	#	8:45 PM		9:30 PM	KAT						
Daily	31		9:45 PM		10:30 PM	MAR						

**Bold indicates freight vessel - limited passenger capacity.**

**Freight vessel trips will not appear on pocket schedules or color brochures.**

During peak travel periods, such as school vacation weeks, unscheduled trips may be added to meet traffic demands.

% Trips 200 and 203 are available to operate on Sundays, if needed.

# Unscheduled freight trips available to operate, if needed.

M/V Martha's Vineyard

Triple crew - Operates 7 days a week from 6:00am - 10:30pm.

M/V Nantucket

Triple crew - Operates 7 days a week from 6:00am - 10:15pm.

M/V Katama

Triple crew - Operates Monday through Saturday from 5:30am to 7:15pm.  
Operates Sunday from 7:30am to 7:15pm.

**2022  
Martha's Vineyard**

**03/30/2022 - 05/16/2022**

	TRIP		LV WH	DUE VH		VESSEL	TRIP		LV VH		DUE WH
<b>Mon-Sat</b>						<b>WH</b>	<b>200</b>	<b>**</b>	<b>5:30 AM</b>		<b>6:15 AM HAZ/Wed</b>
Daily						MAR	6		6:00 AM		6:45 AM
Daily	5		6:00 AM	6:45 AM		IHM	8		7:00 AM		7:45 AM
<b>Mon-Sat</b>	<b>203</b>	<b>**</b>	<b>6:30 AM</b>	<b>7:15 AM HAZ/M-Sat</b>		<b>WH</b>					
<b>Daily</b>						<b>WH</b>	<b>204</b>		<b>7:30 AM</b>		<b>8:15 AM</b>
Daily	7		7:00 AM	7:45 AM		MAR	10		8:15 AM		9:00 AM
Daily	9		8:15 AM	9:00 AM		IHM	12		9:30 AM		10:15 AM
<b>Daily</b>	<b>207</b>	<b>%</b>	<b>8:35 AM</b>	<b>9:20 AM</b>		<b>WH</b>	<b>208</b>		<b>9:50 AM</b>		<b>10:35 AM HAZ/M-Sat</b>
Daily	11		9:30 AM	10:15 AM		MAR	14		10:45 AM		11:30 AM
Daily	13		10:45 AM	11:30 AM		IHM	16		12:00 PM		12:45 PM
<b>Daily</b>	<b>211</b>		<b>11:05 AM</b>	<b>11:50 AM</b>		<b>WH</b>	<b>212</b>	<b>%</b>	<b>12:20 PM</b>		<b>1:05 PM</b>
Daily	15		12:00 PM	12:45 PM		MAR	18		1:15 PM		2:00 PM
Daily	17		1:15 PM	2:00 PM		IHM	20		2:30 PM		3:15 PM
<b>Daily</b>	<b>215</b>		<b>1:35 PM</b>	<b>2:20 PM HAZ/Wed</b>		<b>WH</b>	<b>216</b>		<b>2:50 PM</b>		<b>3:35 PM</b>
Daily	19		2:30 PM	3:15 PM		MAR	22		3:45 PM		4:30 PM
Daily	21		3:45 PM	4:30 PM		IHM	24		5:00 PM		5:45 PM
<b>Daily</b>	<b>219</b>		<b>4:05 PM</b>	<b>4:50 PM</b>		<b>WH</b>	<b>220</b>		<b>5:20 PM</b>		<b>6:05 PM</b>
Daily	23		5:00 PM	5:45 PM		MAR	26		6:15 PM		7:00 PM
Daily	25		6:15 PM	7:00 PM		IHM	28		7:15 PM		8:00 PM
<b>Daily</b>	<b>223</b>		<b>6:30 PM</b>	<b>7:15 PM</b>		<b>WH</b>					
<b>Fri &amp; Sun</b>						<b>WH</b>	<b>224</b>	<b>***</b>	<b>7:30 PM</b>		<b>8:15 PM</b>
Daily	27		7:30 PM	8:15 PM		MAR	30		8:30 PM		9:15 PM
Daily	29		8:30 PM	9:15 PM		IHM	32		9:30 PM		10:15 PM
<b>Fri &amp; Sun</b>	<b>227</b>	<b>***</b>	<b>8:45 PM</b>	<b>9:30 PM</b>		<b>WH</b>					
Daily	31		9:45 PM	10:30 PM		MAR					

**Bold indicates freight vessel - limited passenger capacity.**

**Freight vessel trips will not appear on pocket schedules or color brochures.**

During peak travel periods, such as school vacation weeks, unscheduled trips may be added to meet traffic demands.

\*\* Unscheduled freight trips on Sundays are available to operate if needed.

\*\*\* Unscheduled freight trips on Monday through Thursday and Saturday are available to operate if needed.

% Trips 207 and 212 may operate as Hazardous on Monday thru Friday, if needed.

M/V Martha's Vineyard

Triple crew - Operates 7 days a week from 6:00am - 10:30pm.

M/V Island Home

Triple crew - Operates 7 days a week from 6:00am - 10:15pm.

M/V Woods Hole

Triple crew - Operates Monday through Thursday and Saturday from 5:30am to 7:15pm,  
Friday from 5:30am to 9:30pm and Sunday from 7:30am to 9:30pm.

**2022**  
**Martha's Vineyard**

**05/17/2022 - 06/21/2022**

TRIP	LV WH	DUE VH	DUE OB	VESSEL	TRIP	LV VH	LV OB	DUE WH
<b>Daily</b>				<b>WH</b>	<b>200</b>	<b>5:30 AM</b>		<b>6:15 AM</b>
Daily				NAN/MAR	6	6:00 AM		6:45 AM
<b>Daily</b>	<b>201</b>	<b>5:30 AM</b>	<b>6:15 AM</b>	<b>GOV</b>	<b>202</b>	<b>6:30 AM</b>		<b>7:15 AM HAZ/Wed</b>
Daily	5	6:00 AM	6:45 AM	IHM/NAN	8	7:00 AM		7:45 AM
<b>Daily</b>	<b>203</b>	<b>6:30 AM</b>	<b>7:15 AM HAZ/M-Sat</b>	<b>WH</b>	<b>204</b>	<b>7:30 AM</b>		<b>8:15 AM</b>
Daily	7	7:00 AM	7:45 AM	NAN/MAR	10	8:15 AM		9:00 AM
<b>Daily</b>	<b>205</b>	<b>7:30 AM</b>	<b>8:15 AM</b>	<b>GOV</b>	<b>206</b>	<b>8:35 AM</b>		<b>9:20 AM</b>
Daily	9	8:15 AM	9:00 AM	IHM/NAN	12	9:30 AM		10:15 AM
<b>Daily</b>	<b>207</b>	<b>8:35 AM</b>	<b>9:20 AM</b>	<b>WH</b>	<b>208</b>	<b>9:50 AM</b>		<b>10:35 AM HAZ/M-SAT</b>
Daily	11	9:30 AM	10:15 AM	NAN/MAR	14		10:45 AM	11:30 AM
<b>Daily</b>	<b>209</b>	<b>9:50 AM</b>	<b>10:35 AM</b>	<b>GOV</b>	<b>210</b>	<b>11:05 AM</b>		<b>11:50 AM</b>
Daily	13	10:45 AM	11:30 AM	IHM/NAN	16	12:00 PM		12:45 PM
<b>Daily</b>	<b>211</b>	<b>11:05 AM</b>	<b>11:50 AM</b>	<b>WH</b>	<b>212</b>		<b>12:20 PM</b>	<b>1:05 PM</b>
Daily	15	12:00 PM	12:45 PM	NAN/MAR	18		1:15 PM	2:00 PM
<b>Daily</b>	<b>213</b>	<b>12:20 PM</b>	<b>1:05 PM</b>	<b>GOV</b>	<b>214</b>	<b>1:35 PM</b>		<b>2:20 PM</b>
Daily	17	1:15 PM	2:00 PM	IHM/NAN	20	2:30 PM		3:15 PM
<b>Daily</b>	<b>215</b>	<b>1:35 PM</b>	<b>2:20 PM</b>	<b>WH</b>	<b>216</b>		<b>2:50 PM</b>	<b>3:35 PM</b>
Daily	19	2:30 PM	3:15 PM	NAN/MAR	22		3:45 PM	4:30 PM
<b>Daily</b>	<b>217</b>	<b>2:50 PM</b>	<b>3:35 PM HAZ/Wed</b>	<b>GOV</b>	<b>218</b>	<b>4:05 PM</b>		<b>4:50 PM</b>
Daily	21	3:45 PM	4:30 PM	IHM/NAN	24	5:00 PM		5:45 PM
<b>Daily</b>	<b>219</b>	<b>4:05 PM</b>	<b>4:50 PM</b>	<b>WH</b>	<b>220</b>		<b>5:20 PM</b>	<b>6:05 PM</b>
Daily	23	5:00 PM	5:45 PM	NAN/MAR	26		6:15 PM	7:00 PM
<b>Daily</b>	<b>221</b>	<b>5:20 PM</b>	<b>6:05 PM</b>	<b>GOV</b>	<b>222</b>	<b>6:30 PM</b>		<b>7:15 PM</b>
Daily	25	6:15 PM	7:00 PM	IHM/NAN	28	7:15 PM		8:00 PM
<b>Daily</b>	<b>223</b>	<b>6:30 PM</b>	<b>7:15 PM</b>	<b>WH</b>				
				<b>WH</b>	<b>224</b>	<b>** 7:30 PM</b>		<b>8:15 PM</b>
Daily	27	7:30 PM	8:15 PM	NAN/MAR	30	8:30 PM		9:15 PM
	<b>225</b>	<b>** 7:45 PM</b>	<b>8:30 PM</b>	<b>GOV</b>	<b>226</b>	<b>** 8:45 PM</b>		<b>9:30 PM</b>
Daily	29	8:30 PM	9:15 PM	IHM/NAN	32	9:30 PM		10:15 PM
	<b>227</b>	<b>** 8:45 PM</b>	<b>9:30 PM</b>	<b>WH</b>				
Daily	31	9:45 PM	10:30 PM	NAN/MAR				

M/V Nantucket -TBD based on repair schedule.

M/V Martha's Vineyard - TBD based on repair schedule.

M/V Island Home - TBD based on repair schedule.

M/V Nantucket - TBD based on repair schedule.

**Bold indicates freight vessel - limited passenger capacity**

**Freight vessel trips will not appear on pocket schedules or color brochures.**

During peak travel periods, such as school vacation weeks, unscheduled trips may be added to meet traffic demands.

\*\* Unscheduled freight trips available to operate, if needed.

M/V Nantucket or  
M/V Martha's Vineyard

Triple crew - Operates 7 days a week from 6:00am - 10:30pm.

M/V Island Home or  
M/V Nantucket

Triple crew - Operates 7 days a week from 6:00am - 10:15pm.

M/V Woods Hole

Triple crew - Operates 7 days a week from 5:30am - 7:15pm  
and available to operate until 9:30pm, if needed.

M/V Governor

Triple crew - Operates 7 days a week from 5:30am - 7:15pm  
and available to operate until 9:30pm, if needed.

**2022**  
**Martha's Vineyard**

**06/22/2022 - 09/07/2022**

TRIP	LV WH	DUE VH	DUE OB	VESSEL	TRIP	LV VH	LV OB	DUE WH
<b>Daily</b>				NAN	200	5:30 AM		6:15 AM
Daily				MAR	6	6:00 AM		6:45 AM
<b>Daily</b>	<b>201</b>	<b>5:30 AM</b>	<b>6:15 AM</b>	<b>GOV</b>	<b>202</b>	<b>6:30 AM</b>		<b>7:15 AM HAZ/Wed</b>
Daily	5	6:00 AM	6:45 AM	IHM	8	7:00 AM		7:45 AM
Daily	203	6:30 AM	7:15 AM	NAN	204		7:30 AM	8:15 AM
<b>M-F</b>	<b>229</b>	<b>6:45 AM</b>	<b>7:30 AM HAZ</b>	<b>SAN</b>	<b>230</b>	<b>7:45 AM</b>		<b>8:30 AM</b>
Daily	7	7:00 AM	7:45 AM	MAR	10	8:15 AM		9:00 AM
<b>Daily</b>	<b>205</b>	<b>7:30 AM</b>	<b>8:15 AM HAZ/Sat</b>	<b>GOV</b>	<b>206</b>	<b>8:35 AM</b>		<b>9:20 AM</b>
Daily	9	8:15 AM	9:00 AM	IHM	12	9:30 AM		10:15 AM
Daily	207	8:35 AM	9:20 AM	NAN	208		9:50 AM	10:35 AM
<b>M-F</b>	<b>231</b>	<b>9:00 AM</b>	<b>9:45 AM</b>	<b>SAN</b>	<b>232</b>	<b>10:15 AM</b>		<b>11:00 AM HAZ</b>
Daily	11	9:30 AM	10:15 AM	MAR	14		10:45 AM	11:30 AM
<b>Daily</b>	<b>209</b>	<b>9:50 AM</b>	<b>10:35 AM</b>	<b>GOV</b>	<b>210</b>	<b>11:05 AM</b>		<b>11:50 AM HAZ/Sat</b>
Daily	13	10:45 AM	11:30 AM	IHM	16	12:00 PM		12:45 PM
Daily	211	11:05 AM	11:50 AM	NAN	212		12:20 PM	1:05 PM
<b>M-F</b>	<b>233</b>	<b>11:30 AM</b>	<b>12:15 PM</b>	<b>SAN</b>	<b>232</b>	<b>12:45 PM</b>		<b>1:30 PM</b>
Daily	15	12:00 PM	12:45 PM	MAR	18		1:15 PM	2:00 PM
<b>Daily</b>	<b>213</b>	<b>12:20 PM</b>	<b>1:05 PM</b>	<b>GOV</b>	<b>214</b>	<b>1:35 PM</b>		<b>2:20 PM</b>
Daily	17	1:15 PM	2:00 PM	IHM	20	2:30 PM		3:15 PM
Daily	215	1:35 PM	2:20 PM	NAN	216		2:50 PM	3:35 PM
	<b>235 *</b>	<b>2:00 PM</b>	<b>2:45 PM</b>	<b>SAN</b>	<b>236 *</b>	<b>3:15 PM</b>		<b>4:00 PM</b>
Daily	19	2:30 PM	3:15 PM	MAR	22		3:45 PM	4:30 PM
<b>Daily</b>	<b>217</b>	<b>2:50 PM</b>	<b>3:35 PM HAZ/Wed</b>	<b>GOV</b>	<b>218</b>	<b>4:05 PM</b>		<b>4:50 PM</b>
Daily	21	3:45 PM	4:30 PM	IHM	24	5:00 PM		5:45 PM
Daily	219	4:05 PM	4:50 PM	NAN	220		5:20 PM	6:05 PM
Daily	23	5:00 PM	5:45 PM	MAR	26		6:15 PM	7:00 PM
<b>Daily</b>	<b>221</b>	<b>5:20 PM</b>	<b>6:05 PM</b>	<b>GOV</b>	<b>222</b>	<b>6:30 PM</b>		<b>7:15 PM</b>
Daily	25	6:15 PM	7:00 PM	IHM	28	7:15 PM		8:00 PM
F,S,S	223	6:30 PM	7:15 PM	NAN	224		7:30 PM	8:15 PM
M-TH	223	6:30 PM	7:15 PM	NAN	224 **	7:30 PM		8:15 PM
Daily	27	7:30 PM	8:15 PM	MAR	30		8:30 PM	9:15 PM
<b>F,S,S</b>	<b>225 **</b>	<b>7:45 PM</b>	<b>8:30 PM</b>	<b>GOV</b>	<b>226 **</b>	<b>8:45 PM</b>		<b>9:30 PM</b>
Daily	29	8:30 PM	9:15 PM	IHM	32	9:30 PM		10:15 PM
F,S,S	227 **	8:45 PM	9:30 PM	NAN				
Daily	31	9:45 PM	10:30 PM	MAR				

**Bold indicates freight vessel - limited passenger capacity.**

**Freight vessel trips will not appear on pocket schedules or color brochures.**

During peak travel periods, such as school vacation weeks, unscheduled trips may be added to meet traffic demands.

\*Unscheduled trips on Monday through Friday that are available to operate, if needed.

\*\*Unscheduled trips on Mon, Tues, Wed & Thurs that are available to operate, if needed.

M/V Martha's Vineyard	Triple crew - Operates 7 days a week from 6:00am - 10:30pm.
M/V Island Home	Triple crew - Operates 7 days a week from 6:00am - 10:15pm.
M/V Governor	Triple crew - Operates Monday through Thursday from 5:30am to 7:15pm, Fridays, Saturdays and Sundays from 5:30am to 9:30pm.
M/V Nantucket	Triple crew - Operates Monday through Thursday from 5:30am to 7:15pm, Fridays, Saturdays and Sundays from 5:30am to 9:30pm.
M/V Sankaty	Single crew - Operates Monday through Friday from 6:45am to 1:30pm.

**2022**  
**Martha's Vineyard**

**09/08/2022 - 10/19/2022**

TRIP	LV WH	DUE VH	DUE OB	VESSEL	TRIP	LV VH	LV OB	DUE WH
<b>Daily</b>				<b>KAT</b>	<b>200</b>	<b>5:30 AM</b>		<b>6:15 AM</b>
Daily				NAN	6	6:00 AM		6:45 AM
<b>Daily</b>	<b>201</b>	<b>5:30 AM</b>	<b>6:15 AM</b>	<b>GOV</b>	<b>202</b>	<b>6:30 AM</b>		<b>7:15 AM</b>
Daily	5	6:00 AM	6:45 AM	IHM	8	7:00 AM		7:45 AM
<b>Daily</b>	<b>203</b>	<b>6:30 AM</b>	<b>7:15 AM</b>	<b>HAZ/M-SAT</b>	<b>KAT</b>	<b>204</b>	<b>7:30 AM</b>	<b>8:15 AM</b>
Daily	7	7:00 AM	7:45 AM	NAN	10	8:15 AM		9:00 AM
<b>Daily</b>	<b>205</b>	<b>7:30 AM</b>	<b>8:15 AM</b>	<b>GOV</b>	<b>206</b>	<b>8:35 AM</b>		<b>9:20 AM</b>
Daily	9	8:15 AM	9:00 AM	IHM	12	9:30 AM		10:15 AM
<b>Daily</b>	<b>207</b>	<b>8:35 AM</b>		<b>9:20 AM</b>	<b>KAT</b>	<b>208</b>	<b>9:50 AM</b>	<b>10:35 AM</b>
Daily	11	9:30 AM		10:15 AM	NAN	14		10:45 AM
Daily								11:30 AM
<b>Daily</b>	<b>209</b>	<b>9:50 AM</b>	<b>10:35 AM</b>	<b>GOV</b>	<b>210</b>	<b>11:05 AM</b>		<b>11:50 AM</b>
Daily	13	10:45 AM	11:30 AM	IHM	16	12:00 PM		12:45 PM
<b>Daily</b>	<b>211</b>	<b>11:05 AM</b>		<b>11:50 AM</b>	<b>KAT</b>	<b>212</b>	<b>12:20 PM</b>	<b>1:05 PM</b>
Daily	15	12:00 PM		12:45 PM	NAN	18		1:15 PM
Daily								2:00 PM
<b>Daily</b>	<b>213</b>	<b>12:20 PM</b>	<b>1:05 PM</b>	<b>GOV</b>	<b>214</b>	<b>1:35 PM</b>		<b>2:20 PM</b>
Daily	17	1:15 PM	2:00 PM	IHM	20	2:30 PM		3:15 PM
<b>Daily</b>	<b>215</b>	<b>1:35 PM</b>		<b>2:20 PM</b>	<b>KAT</b>	<b>216</b>	<b>2:50 PM</b>	<b>3:35 PM</b>
Daily	19	2:30 PM		3:15 PM	NAN	22		3:45 PM
Daily								4:30 PM
<b>Daily</b>	<b>217</b>	<b>2:50 PM</b>	<b>3:35 PM</b>	<b>HAZ/Wed</b>	<b>GOV</b>	<b>218</b>	<b>4:05 PM</b>	<b>4:50 PM</b>
Daily	21	3:45 PM	4:30 PM	IHM	24	5:00 PM		5:45 PM
<b>Daily</b>	<b>219</b>	<b>4:05 PM</b>		<b>4:50 PM</b>	<b>KAT</b>	<b>220</b>	<b>5:20 PM</b>	<b>6:05 PM</b>
Daily	23	5:00 PM		5:45 PM	NAN	22		6:15 PM
Daily								7:00 PM
<b>Daily</b>	<b>221</b>	<b>5:20 PM</b>	<b>6:05 PM</b>	<b>GOV</b>	<b>222</b>	<b>6:30 PM</b>		<b>7:15 PM</b>
Daily	25	6:15 PM	7:00 PM	IHM	28	7:15 PM		8:00 PM
<b>Daily</b>	<b>223</b>	<b>6:30 PM</b>	<b>7:15 PM</b>	<b>KAT</b>				
				<b>KAT</b>	<b>224</b>	<b>**</b>	<b>7:30 PM</b>	<b>8:15 PM</b>
Daily	27	7:30 PM	8:15 PM	NAN	30		8:30 PM	9:15 PM
	<b>225</b>	<b>**</b>	<b>7:45 PM</b>	<b>8:30 PM</b>	<b>GOV</b>	<b>226</b>	<b>**</b>	<b>8:45 PM</b>
Daily	29	8:30 PM	9:15 PM	IHM	32	9:30 PM		10:15 PM
	<b>227</b>	<b>**</b>	<b>8:45 PM</b>	<b>9:30 PM</b>	<b>KAT</b>			
Daily	31	9:45 PM	10:30 PM	NAN				

**Bold indicates freight vessel - limited passenger capacity.**

**Freight vessel trips will not appear on pocket schedules or color brochures.**

During peak travel periods, such as school vacation weeks, unscheduled trips may be added to meet traffic demands.

\*\*Unscheduled freight trips available to operate, in needed.

M/V Nantucket

Triple crew - Operates 7 days a week from 6:00am - 10:30pm.

M/V Island Home

Triple crew - Operates 7 days a week from 6:00am - 10:15pm.

M/V Governor

Triple crew - Operates 7 days a week from 5:30am - 7:15pm  
and available to operate until 9:30pm, if needed.

M/V Katama

Triple crew - Operates 7 days a week from 5:30am - 7:15pm  
and available to operate until 9:30pm, if needed.



**2022  
Martha's Vineyard**

**10/20/2022 - 01/02/2023**

	TRIP	LV WH	DUE VH	DUE OB	VESSEL	TRIP	LV VH	LV OB	DUE WH
<b>Daily</b>					<b>KAT</b>	<b>200</b>	<b>5:30 AM</b>		<b>6:15 AM</b>
Daily					NAN/MAR	6	6:00 AM		6:45 AM
Daily	5	6:00 AM	6:45 AM		IHM	8	7:00 AM		7:45 AM
<b>Daily</b>	<b>203</b>	<b>6:30 AM</b>	<b>7:15 AM</b>	<b>HAZ/M-Sat</b>	<b>KAT</b>	<b>204</b>	<b>7:30 AM</b>		<b>8:15 AM HAZ/W</b>
Daily	7	7:00 AM	7:45 AM		NAN/MAR	10	8:15 AM		9:00 AM
Daily	9	8:15 AM	9:00 AM		IHM	12	9:30 AM		10:15 AM
<b>Daily</b>	<b>207</b>	<b>*</b>	<b>8:35 AM</b>	<b>9:20 AM HAZ/M-F</b>	<b>KAT</b>	<b>208</b>	<b>9:50 AM</b>		<b>10:35 AM HAZ/M-Sat</b>
Daily	11	9:30 AM	10:15 AM		NAN/MAR	14	10:45 AM		11:30 AM
Daily	13	10:45 AM	11:30 AM		IHM	16	12:00 PM		12:45 PM
<b>Daily</b>	<b>211</b>	<b>11:05 AM</b>	<b>11:50 AM</b>		<b>KAT</b>	<b>212</b>	<b>*</b>	<b>12:20 PM</b>	<b>1:05 PM HAZ/M-F</b>
Daily	15	12:00 PM	12:45 PM		NAN/MAR	18	1:15 PM		2:00 PM
Daily	17	1:15 PM	2:00 PM		IHM	20	2:30 PM		3:15 PM
<b>Daily</b>	<b>215</b>	<b>1:35 PM</b>	<b>2:20 PM</b>	<b>HAZ/W</b>	<b>KAT</b>	<b>216</b>	<b>2:50 PM</b>		<b>3:35 PM</b>
Daily	19	2:30 PM	3:15 PM		NAN/MAR	22	3:45 PM		4:30 PM
Daily	21	3:45 PM	4:30 PM		IHM	24	5:00 PM		5:45 PM
<b>Daily</b>	<b>219</b>	<b>4:05 PM</b>	<b>4:50 PM</b>		<b>KAT</b>	<b>220</b>	<b>5:20 PM</b>		<b>6:05 PM</b>
Daily	23	5:00 PM	5:45 PM		NAN/MAR	26	6:15 PM		7:00 PM
Daily	25	6:15 PM	7:00 PM		IHM	28	7:15 PM		8:00 PM
<b>Daily</b>	<b>223</b>	<b>6:30 PM</b>	<b>7:15 PM</b>		<b>KAT</b>				
					<b>KAT</b>	<b>224</b>	<b>**</b>	<b>7:30 PM</b>	<b>8:15 PM</b>
Daily	27	7:30 PM	8:15 PM		NAN/MAR	30	8:30 PM		9:15 PM
Daily	29	8:30 PM	9:15 PM		IHM	32	9:30 PM		10:15 PM
	<b>227</b>	<b>**</b>	<b>8:45 PM</b>	<b>9:30 PM</b>	<b>KAT</b>				
Daily	31	9:45 PM	10:30 PM		NAN/MAR				

M/V Nantucket 10/20/2022 to 10/22/2022

M/V Martha's Vineyard 10/23/2022 to 01/02/2023

**Bold indicates freight vessel - limited passenger capacity.**

**Freight vessel trips will not appear on pocket schedules or color brochures.**

During peak travel periods, such as school vacation weeks, unscheduled trips may be added to meet traffic demands.

\* Trips 207 and 212 may operate as Hazardous on Monday through Friday, if needed.

\*\* Unscheduled freight trips available to operate, if needed.

M/V Katama will not operate on Thanksgiving Day (11/24/2022)

M/V Katama will not operate on Christmas Day (12/25/2022)

M/V Nantucket or  
M/V Martha's Vineyard

Triple crew - Operates 7 days a week from 6:00am - 10:30pm.

M/V Island Home

Triple crew - Operates 7 days a week from 6:00am - 10:15pm.

M/V Katama

Triple crew - Operates Monday through Thursday & Saturday from 5:30am to 7:15pm,  
Friday and Sunday 5:30am to 9:30pm.

**2022  
Nantucket**

**01/05/2022 - 02/15/2022**

	TRIP	LV HY	DUE NT	VESSEL	TRIP	LV NT	DUE HY
	DAILY			NAN/EAG	102	6:30 AM	8:45 AM
	<b>Mon-Sat 301</b>	<b>5:45 AM</b>	<b>8:00 AM HAZ</b>	<b>WH/GAY</b>	<b>302</b>	<b>8:30 AM</b>	<b>10:45 AM HAZ</b>
	DAILY 103	9:15 AM	11:30 AM	NAN/EAG	106	12:00 PM	2:15 PM
	<b>Mon-Sat 305</b>	<b>11:15 AM</b>	<b>1:30 PM HAZ</b>	<b>WH/GAY</b>	<b>306</b>	<b>1:45 PM</b>	<b>4:00 PM HAZ</b>
	DAILY 107	2:45 PM	5:00 PM	NAN/EAG	110	5:30 PM	7:45 PM
	<b>As Needed 309</b>	<b>4:30 PM</b>	<b>6:45 PM HAZ</b>	<b>WH/GAY</b>	<b>310</b>	<b>7:15 PM</b>	<b>9:30 PM HAZ</b>
	DAILY 111	8:00 PM	10:15 PM	NAN/EAG			

**Bold indicates freight vessel - limited passenger capacity.**

**Freight vessel trips will not appear on pocket schedules or color brochures.**

Trips 301, 302, 305 & 306 are available to operate on Sunday, if needed.

Trips 309 & 310 are available to operate on Saturday and Sunday, if needed.

M/V Nantucket 01/05/2022 to 01/10/2022  
M/V Woods Hole 01/05/2022 to 01/10/2022

M/V Eagle 01/11/2022 to 02/15/2022  
M/V Gay Head 01/11/2022 to 02/15/2022

M/V Nantucket or  
M/V Eagle

Triple crew - Operates 7 days a week from 6:30am to 10:15pm.

M/V Woods Hole or  
M/V Gay Head

Triple crew- Operates Monday - Friday 5:45am to 9:30pm &  
Saturdays 5:45am to 4:00pm.

**02/16/2022 - 03/29/2022**

	TRIP	LV HY	DUE NT	VESSEL	TRIP	LV NT	DUE HY
	DAILY			EAG	102	6:30 AM	8:45 AM
	<b>Mon-Sat 301</b>	<b>5:45 AM</b>	<b>8:00 AM HAZ</b>	<b>GAY</b>	<b>302</b>	<b>8:30 AM</b>	<b>10:45 AM HAZ</b>
	DAILY 103	9:15 AM	11:30 AM	EAG	106	12:00 PM	2:15 PM
	<b>Mon-Sat 305</b>	<b>11:15 AM</b>	<b>1:30 PM HAZ</b>	<b>GAY</b>	<b>306</b>	<b>1:45 PM</b>	<b>4:00 PM HAZ</b>
	DAILY 107	2:45 PM	5:00 PM	EAG	110	5:30 PM	7:45 PM
	<b>As Needed 309</b>	<b>4:30 PM</b>	<b>6:45 PM HAZ</b>	<b>GAY</b>	<b>310</b>	<b>7:15 PM</b>	<b>9:30 PM HAZ</b>
	DAILY 111	8:00 PM	10:15 PM	EAG			

**Bold indicates freight vessel - limited passenger capacity.**

**Freight vessel trips will not appear on pocket schedules or color brochures.**

Trips 301, 302, 305 & 306 are available to operate on Sunday, if needed.

Trips 309 & 310 are available to operate on Saturday and Sunday, if needed.

M/V Eagle

Triple crew - Operates 7 days a week from 6:30am to 10:15pm.

M/V Gay Head

Triple crew- Operates Monday - Friday 5:45am to 9:30pm &  
Saturdays 5:45am to 4:00pm.

**2022  
Nantucket**

**03/30/2022 - 05/16/2022**

	TRIP	LV HY	DUE NT	VESSEL	TRIP	LV NT	DUE HY
	DAILY			EAG	102	6:30 AM	8:45 AM
	<b>DAILY</b>	<b>301</b>	<b>5:45 AM 8:00 AM HAZ/M-Sat</b>	<b>GAY</b>	<b>302</b>	<b>8:30 AM 10:45 AM HAZ/M-Sat</b>	
	<b>M-F</b>	<b>303</b>	<b>6:30 AM 8:45 AM</b>	<b>SAN</b>	<b>304</b>	<b>9:15 AM 11:30 AM</b>	
	DAILY	103	9:15 AM 11:30 AM	EAG	106	12:00 PM 2:15 PM	
	<b>DAILY</b>	<b>305</b>	<b>11:15 AM 1:30 PM HAZ/M-Sat</b>	<b>GAY</b>	<b>306</b>	<b>1:45 PM 4:00 PM HAZ/M-Sat</b>	
	<b>M-F</b>	<b>307</b>	<b>12:00 PM 2:15 PM</b>	<b>SAN</b>	<b>308</b>	<b>2:45 PM 5:00 PM</b>	
	DAILY	107	2:45 PM 5:00 PM	EAG	110	5:30 PM 7:45 PM	
	<b>DAILY</b>	<b>309</b>	<b>4:30 PM 6:45 PM</b>	<b>GAY</b>	<b>310</b>	<b>7:15 PM 9:30 PM</b>	
	<b>As Needed</b>	<b>311</b>	<b>5:30 PM 7:45 PM</b>	<b>SAN</b>	<b>312</b>	<b>8:00 PM 10:15 PM</b>	
	DAILY	111	8:00 PM 10:15 PM	EAG			

**Bold indicates freight vessel - limited passenger capacity.**

**Freight vessel trips will not appear on pocket schedules or color brochures.**

M/V Eagle Triple crew - Operates 7 days a week from 6:30am to 10:15pm.

M/V Gay Head Triple crew - Operates 7 days a week from 5:45am to 9:30pm.

M/V Sankaty Two single crews - Operates Monday - Friday 6:30am to 10:15pm.

**2022  
Nantucket**

**05/17/2022 - 05/25/2022 and 06/01/2022 - 06/21/2022**

TRIP			LV HY	DUE NT		VESSEL	TRIP	LV NT	DUE HY	
DAILY						EAG/NAN	102	6:30 AM	8:45 AM	
Mon - Sat	301	*	5:30 AM	7:45 AM	HAZ/M-Sat	GAY	302	*	8:00 AM	10:15 AM HAZ/M-F
M-F	303	*	6:30 AM	8:45 AM	HAZ/M-F	SAN	304		9:15 AM	11:30 AM
DAILY			103	9:15 AM	11:30 AM	EAG/NAN	106	12:00 PM	2:15 PM	
DAILY	305	*	10:45 AM	1:00 PM	HAZ/M-F	GAY	306	*	1:30 PM	3:45 PM HAZ/M-Sat
M-F	307		12:00 PM	2:15 PM		SAN	308		2:45 PM	5:00 PM
DAILY			107	2:45 PM	5:00 PM	EAG/NAN	110	5:30 PM	7:45 PM	
Sun - Fri	309		4:15 PM	6:30 PM		GAY	310		6:45 PM	9:00 PM
M-F	311		5:30 PM	7:45 PM		SAN	312		8:00 PM	10:15 PM
DAILY			111	8:00 PM	10:15 PM	EAG/NAN				

M/V Eagle - TBD based on repair schedule.

M/V Nantucket - TBD based on repair schedule.

**Bold indicates freight vessel - limited passenger capacity.**

**Freight vessel trips will not appear on pocket schedules or color brochures.**

\* Hazardous trips Monday - Friday and non-hazardous when running on Saturday and Sunday.

Trips 301 & 302 are not scheduled to operate on Sundays, however these trips are available to operate, if needed.

Trips 309 & 310 are not scheduled to operate on Saturdays, however these trips are available to operate, if needed.

During peak travel periods, such as school vacation weeks, unscheduled trips may be added to meet traffic demands.

M/V Eagle or  
M/V Nantucket

Triple crew - Operates 7 days a week from 6:30am to 10:15pm.

M/V Gay Head

Triple crew - Operates 7 days a week from 5:30am to 9:00pm.

M/V Sankaty

Two single crews - Operated Monday through Friday from 6:30am to 10:15pm.

**05/26/2022 - 05/31/2022**

TRIP			LV HY	DUE NT	VESSEL	TRIP		LV NT	DUE HY
DAILY					EAG	102		6:30 AM	8:45 AM
DAILY	301	*	5:30 AM	7:45 AM HAZ/M-F	GAY	302	*	8:00 AM	10:15 AM HAZ/M-F
DAILY	101		6:30 AM	8:45 AM	NAN	104		9:15 AM	11:30 AM
DAILY	103		9:15 AM	11:30 AM	EAG	106		12:00 PM	2:15 PM
DAILY	305	*	10:45 AM	1:00 PM HAZ/M-F	GAY	306	*	1:30 PM	3:45 PM HAZ/M-F
DAILY	105		12:00 PM	2:15 PM	NAN	108		2:45 PM	5:00 PM
DAILY	107		2:45 PM	5:00 PM	EAG	110		5:30 PM	7:45 PM
DAILY	309		4:15 PM	6:30 PM	GAY	310		6:45 PM	9:00 PM
DAILY	109		5:30 PM	7:45 PM	NAN	112		8:00 PM	10:15 PM
DAILY	111		8:00 PM	10:15 PM	EAG				

**Bold indicates freight vessel - limited passenger capacity.**

**Freight vessel trips will not appear on pocket schedules or color brochures.**

During peak travel periods, such as school vacation weeks, unscheduled trips may be added to meet traffic demands.

\* Hazardous trips Monday - Friday and non-hazardous when running on Saturday and Sunday

M/V Eagle

Triple crew - Operates 7 days a week from 6:30am to 10:15pm.

M/V Nantucket

Triple crew - Operates 7 days a week from 6:30am to 10:15pm.

M/V Gay Head

Triple crew - Operates 7 days a week from 5:30am to 9:00pm.

**2022  
Nantucket**

**06/22/2022 - 09/07/2022**

TRIP			LV HY	DUE NT		VESSEL	TRIP		LV NT	DUE HY	
DAILY						EAG	102		6:30 AM	8:45 AM	
DAILY	301	*	5:30 AM	7:45 AM	HAZ/M-Sat	GAY/KAT	302	*	8:00 AM	10:15 AM	HAZ/M-F
DAILY	101		6:30 AM	8:45 AM		WH	104		9:15 AM	11:30 AM	
DAILY	103		9:15 AM	11:30 AM		EAG	106		12:00 PM	2:15 PM	
DAILY	305	*	10:45 AM	1:00 PM	HAZ/M-F	GAY/KAT	306	*	1:30 PM	3:45 PM	HAZ/M-Sat
DAILY	105		12:00 PM	2:15 PM		WH	108		2:45 PM	5:00 PM	
DAILY	107		2:45 PM	5:00 PM		EAG	110		5:30 PM	7:45 PM	
DAILY	309		4:15 PM	6:30 PM		GAY/KAT	310		6:45 PM	9:00 PM	
DAILY	109		5:30 PM	7:45 PM		WH	112		8:00 PM	10:15 PM	
DAILY	111		8:00 PM	10:15 PM		EAG					

M/V Gay Head: 06/25/2022 - 08/08/2022

M/V Katama: 08/09/2022 - 09/07/2022

**Bold indicates freight vessel - limited passenger capacity.**

**Freight vessel trips will not appear on pocket schedules or color brochures.**

\*Hazardous Monday through Saturday and non-hazardous when running on Saturdays, Sundays & Holidays (7/4 and 9/5).

During peak travel periods, such as school vacation weeks, unscheduled trips may be added to meet traffic demands.

M/V Eagle Triple crew - Operates 7 days a week from 6:30am to 10:15pm.

M/V Woods Hole Triple crew - Operates 7 days a week from 6:30am to 10:15pm.

M/V Gay Head or  
M/V Katama Triple crew - Operates 7 days a week from 5:30am to 9:00pm.

**09/08/2022 - 10/19/2022**

TRIP		LV HY	DUE NT		VESSEL	TRIP	LV NT	DUE HY	
DAILY					EAG	102	6:30 AM	8:45 AM	
M-F	301	5:30 AM	7:45 AM HAZ/M-F		GAY	302	8:00 AM	10:15 AM HAZ/M-F	
DAILY	101	6:30 AM	8:45 AM		WH	104	9:15 AM	11:30 AM	
DAILY	103	9:15 AM	11:30 AM		EAG	106	12:00 PM	2:15 PM	
M-F	305	10:45 AM	1:00 PM HAZ/M-F		GAY	306	1:30 PM	3:45 PM HAZ/M-F	
DAILY	105	12:00 PM	2:15 PM		WH	108	2:45 PM	5:00 PM	
DAILY	107	2:45 PM	5:00 PM		EAG	110	5:30 PM	7:45 PM	
M-F	309	*	4:15 PM	6:30 PM	GAY	310	*	6:45 PM	9:00 PM
DAILY	109	5:30 PM	7:45 PM		WH	112	8:00 PM	10:15 PM	
DAILY	111	8:00 PM	10:15 PM		EAG				

**Bold indicates freight vessel - limited passenger capacity.**

**Freight vessel trips will not appear on pocket schedules or color brochures.**

During peak travel periods, such as school vacation weeks, unscheduled trips may be added to meet traffic demands.

\* Optional trips that may be scheduled to operate as needed.

M/V Eagle Triple crew - Operates 7 days a week from 6:30am to 10:15pm.

M/V Woods Hole Triple crew - Operates 7 days a week from 6:30am to 10:15pm.

M/V Gay Head Two single crews - Operates Monday thru Friday from 5:30am to 9:00pm.

**2022  
Nantucket**

**10/20/2022 - 01/02/2023**

TRIP	LV HY	DUE NT	VESSEL	TRIP	LV NT	DUE HY
DAILY			EAG/NAN	102	6:30 AM	8:45 AM
<b>Mon - Sat</b>	<b>301</b>	<b>*</b>	<b>5:45 AM 8:00 AM HAZ/M-Sat</b>	<b>WH</b>	<b>302</b>	<b>8:30 AM 10:45 AM</b>
DAILY	103		9:15 AM 11:30 AM	EAG/NAN	106	12:00 PM 2:15 PM
<b>DAILY</b>	<b>305</b>	<b>**</b>	<b>11:15 AM 1:30 PM HAZ/M-F</b>	<b>WH</b>	<b>306</b>	<b>*</b> <b>1:45 PM 4:00 PM HAZ/M-Sat</b>
DAILY	107		2:45 PM 5:00 PM	EAG/NAN	110	5:30 PM 7:45 PM
<b>Sun - Fri</b>	<b>309</b>		<b>4:30 PM 6:45 PM</b>	<b>WH</b>	<b>310</b>	<b>7:15 PM 9:30 PM</b>
DAILY	111		8:00 PM 10:15 PM	EAG/NAN		

M/V Eagle: 10/20/2022 - 10/22/2023

M/V Nantucket: 10/23/2022 - 01/02/2023

**Bold indicates freight vessel - limited passenger capacity.**

**Freight vessel trips will not appear on pocket schedules or color brochures.**

During peak travel periods, such as school vacation weeks, unscheduled trips may be added to meet traffic demands.

Trips 301, 302, 305, 306, 309 & 310 will not operate on Thanksgiving (11/24/2022) & Christmas Day (12/25/2022)

Trips 301 & 306 will not be hazardous on 12/03/2022

Trips 301 & 302 are not scheduled to operate on Sundays, however these trips are available to operate, if necessary.

Trips 309 & 310 are not scheduled to operate on Saturdays, however these trips are available to operate, if necessary.

\* Hazardous trips Monday - Saturday and non-hazardous when running on Sunday

\*\* Hazardous trips Monday - Friday and non-hazardous when running on Saturday and Sunday

M/V Eagle or  
M/V Nantucket

triple crew - Operates 7 days a week from 6:30am to 10:15pm.

M/V Woods Hole

triple crew - Operates 7 days a week from 5:45am to 9:30pm.

**2022**  
**Nantucket**

**M/V IYANOUGH**

**03/30/2022 - 05/16/2022**

	LV HY	DUE NT	TRIP	LV NT	DUE HY	TRIP
DAILY	8:15 AM	9:15 AM	403	9:30 AM	10:30 AM	404
DAILY	11:00 AM	12:00 PM	405	12:30 PM	1:30 PM	406
DAILY	2:00 PM	3:00 PM	407	3:30 PM	4:30 PM	408
DAILY	5:00 PM	6:00 PM	409	6:15 PM	7:15 PM	410
<b>DOUBLE CREWED</b>						

**05/17/2022 - 10/19/2022**

	LV HY	DUE NT	TRIP	LV NT	DUE HY	TRIP
DAILY	8:15 AM	9:15 AM	403	9:30 AM	10:30 AM	404
DAILY	11:00 AM	12:00 PM	405	12:30 PM	1:30 PM	406
DAILY	2:00 PM	3:00 PM	407	3:30 PM	4:30 PM	408
DAILY	5:00 PM	6:00 PM	409	6:15 PM	7:15 PM	410
DAILY	7:30 PM	8:30 PM	411	8:45 PM	9:45 PM	412

**TRIPLE CREWED**

**10/20/2022 - 01/02/2023**

	LV HY	DUE NT	TRIP	LV NT	DUE HY	TRIP
DAILY	8:15 AM	9:15 AM	403	9:30 AM	10:30 AM	404
DAILY	11:00 AM	12:00 PM	405	12:30 PM	1:30 PM	406
DAILY	2:00 PM	3:00 PM	407	3:30 PM	4:30 PM	408
DAILY	5:00 PM	6:00 PM	409	6:15 PM	7:15 PM	410

**DOUBLE CREWED**

During peak travel periods, such as school vacation weeks, unscheduled trips may be added to meet traffic demands.